

PARTS CATALOGUE

KT100SECE9 (7YP5) U.S.A.



1G7YP-110E1

()

KT100SECE9
PARTS CATALOGUE
©2008 by Yamaha Motor Co., Ltd.
1st edition, September 2008
All rights reserved.
Any reprinting or unauthorized use
without the written permission of
Yamaha Motor Co., Ltd.
is expressly prohibited.

FOREWORD

This Parts Catalogue is related to the parts for the model(s) on the cover page. When you are ordering replacement parts, please refer to this Parts Catalogue and quote both part numbers and part names correctly.

1. Modifications or additions which have been made after the issue of the Parts Catalogue will be announced in the Parts News.

It is advisable that you make the necessary corrections to the Parts Catalogue according to the Parts News.

2. Abbreviations

The following abbreviations are used in this Parts Catalogue.

“UR” Use specified parts number.

“UN” Use as many as needed.

“AP” Alternate Parts

“LM” Locally Made (Parts need to be ordered locally)

“F#” Frame No. (Applicable machine No.)

“O/S” Over Size

3. The number of components for assembly

- Parts, which are to be supplied in an assembly, are listed with a dot (.) in front of the part name as shown below.
- The numeral appearing to the right of each component part indicates the quantity of parts for each assembly unit.

PART NO.	DESCRIPTION	Q'TY	REMARKS
2F5-83310-60	FRONT FLASHER LIGHT ASSY	2	
115-83311-60	.BULB (6V-18W)	1	

4. Applicable colours of graphics are represented in the “REMARKS” as shown below.

PART NO.	DESCRIPTION	Q'TY	REMARKS
2N4-24110-00-X5	FUEL TANK COMP.	2	MXR
3J1-24240-10	.GRAPHIC, FUEL TANK	1	FOR MXR

5. Note that the illustrations for reference in finding parts numbers are not to be used for assembling. When assembling, please use the applicable service manual.

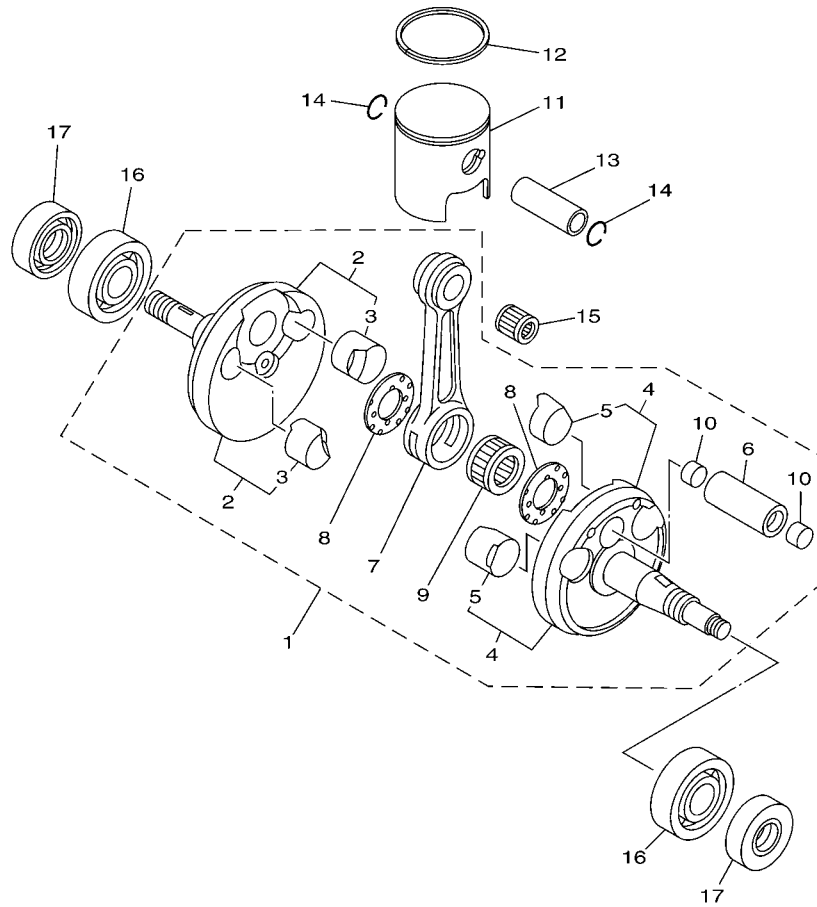
6. The asterisk (*) before a reference number indicates modified items after the first edition.

CONTENTS

CYLINDER	1
CRANKSHAFT & PISTON	2
CARBURETOR	4
EXHAUST	6
CRANKCASE	7
MAGNETO	8

INDEX

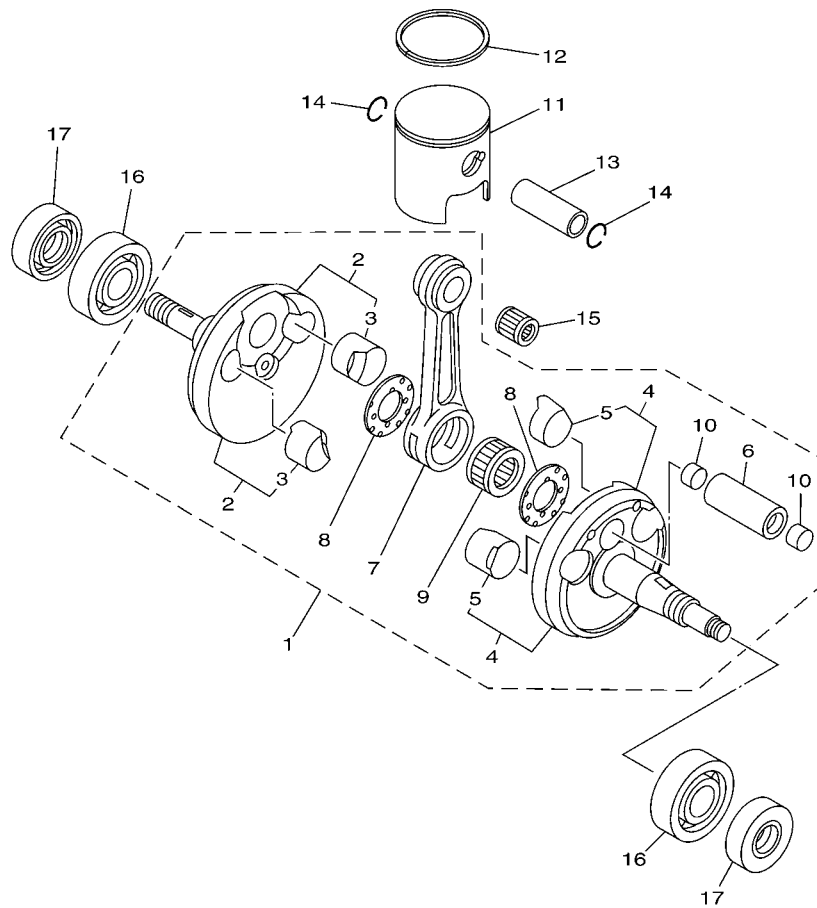
NUMERICAL INDEX	9
-----------------------	---




 7YU7010-G020

FIG. 2 CRANKSHAFT & PISTON

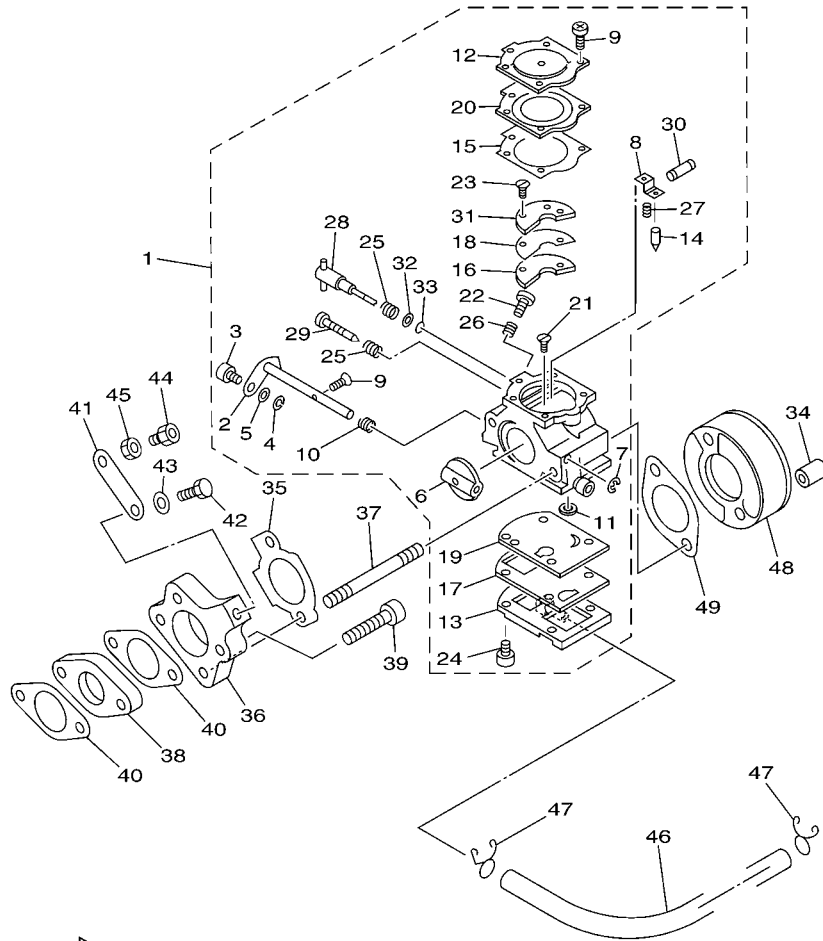
REF. NO.	PART NO.	DESCRIPTION	7YP5				REMARKS
1	7YP-11400-00	CRANKSHAFT ASSY	1				
2	J67-11412-00	.CRANK 1	1				
3	787-11413-00	..PLANE BEARING, BALANCE WEIGHT	2				
4	7YP-11422-00	.CRANK 2	1				
5	787-11413-00	..PLANE BEARING, BALANCE WEIGHT	2				
6	787-11681-00	.PIN, CRANK 1	1				
7	7F6-11651-02	.ROD, CONNECTING	1				
8	90209-20159	.WASHER	2				
9	93310-420B1	.BEARING	1				
10	787-15385-00	.PLUG, BLIND	2				
11	787-11631-03-97	PISTON (51.97MM STD)	1				UR
	787-11631-03-98	PISTON (51.98MM STD)	1				UR
	787-11631-03-99	PISTON (51.99MM STD)	1				UR
	787-11631-13-05	PISTON (52.05MM O/S)	1				AP
	787-11631-13-10	PISTON (52.10MM O/S)	1				AP
	787-11631-13-15	PISTON (52.15MM O/S)	1				AP
	787-11631-13-20	PISTON (52.20MM O/S)	1				AP
	787-11635-13	PISTON (52.25MM O/S)	1				AP
	787-11635-13-30	PISTON (52.30MM O/S)	1				AP
	787-11635-13-35	PISTON (52.35MM O/S)	1				AP
	787-11635-13-40	PISTON (52.40MM O/S)	1				AP
	787-11635-13-45	PISTON (52.45MM O/S)	1				AP
	787-11636-13	PISTON (52.50MM 2ND O/S)	1				AP
	787-11636-13-55	PISTON (52.55MM O/S)	1				AP
	787-11636-13-60	PISTON (52.60MM O/S)	1				AP
12	7YF-11611-00	RING, PISTON (STD-52.00MM O/S)	1				
	7YF-11611-B0	RING, PISTON (52.05MM O/S)	1				AP




 7YU7010-G020

FIG. 2 CRANKSHAFT & PISTON

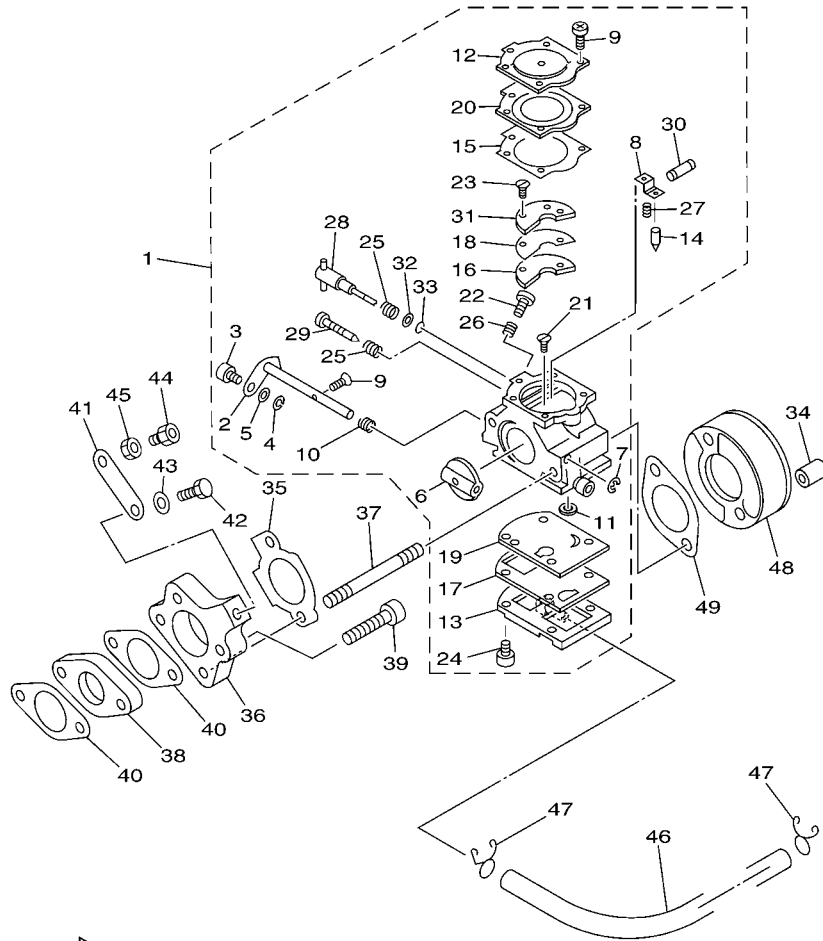
REF. NO.	PART NO.	DESCRIPTION	7YF5				REMARKS
12	7YF-11611-C0	RING, PISTON (52.10MM O/S)	1				AP
	7YF-11611-D0	RING, PISTON(52.15MM O/S)	1				AP
	7YF-11611-E0	RING, PISTON(52.20MM O/S)	1				AP
	7YF-1161A-00	RING, PISTON (52.25MM O/S)	1				AP
	7YF-1161A-A0	RING, PISTON (52.30MM O/S)	1				AP
	7YF-1161A-B0	RING, PISTON (52.35MM O/S)	1				AP
	7YF-1161A-C0	RING, PISTON (52.40MM O/S)	1				AP
	7YF-1161A-D0	RING, PISTON (52.45MM O/S)	1				AP
	7YF-1162A-00	RING, PISTON (52.50MM O/S)	1				AP
	7YF-1162A-A0	RING, PISTON (52.55MM O/S)	1				AP
	7YF-1162A-B0	RING, PISTON (52.60MM O/S)	1				AP
13	131-11633-00	PIN, PISTON	1				
14	90468-12N00	CLIP	2				
15	93310-214T1	BEARING	1				
16	93306-30445	BEARING	2				
17	93102-20N03	OIL SEAL	2				




7YU6010-F030

FIG. 3 CARBURETOR

REF. NO.	PART NO.	DESCRIPTION	QTY	REMARKS
1	787-14501-00	CARBURETOR ASSY 1	1	
2	738-14577-00	.SHAFT ASSY, THROTTLE	1	
3	738-14568-00	.SWIVEL	1	
4	738-14557-00	.RING, SPRING RETAINING	1	
5	738-14597-00	.WASHER	1	
6	738-14546-00	.VALVE, THROTTLE	1	
7	738-14557-10	.RING, SPRING RETAINING	1	
8	738-14547-00	.LEVER, METALING	1	
9	7EN-14567-00	.SCREW	5	
10	738-14555-00	.SPRING, THROTTLE RETURN	1	
11	738-14569-00	.SCREEN, INLET	1	
12	738-14517-00	.COVER, METALING DIAPHRAGM (# 2)	1	
13	787-14518-00	.COVER ASSY, PUMP	1	
14	7EN-14538-00	.VALVE, INLET NEEDLE	1	
15	738-14536-00	.GASKET, METALING DIAPHRAGM	1	
16	738-14537-00	.GASKET, CIRCUIT	1	
17	738-14553-00	.GASKET, PUMP	1	
18	738-14552-00	.DIAPHRAGM,CIRCUITCHECK VALVE	1	
19	738-14551-00	.DIAPHRAGM, PUMP	1	
20	738-14545-00	.DIAPHRAGM ASSY, METALING	1	
21	738-14592-00	.SCREW, METALING LEVER PIN	1	
22	738-14523-00	.SCREW, IDLE ADJUST	1	
23	738-14529-00	.SCREW, CIRCUIT PLATE	2	
24	738-14528-00	.SCREW, PUMPCOVER	4	
25	738-14531-00	.SPRING, NEEDLE ADJUST	2	
26	738-14533-00	.SPRING, IDLE ADJUST	1	
27	738-14556-00	.SPRING, METERING LEVER(24G)	1	



FWD
7YU6010-F030

FIG. 3 CARBURETOR

REF. NO.	PART NO.	DESCRIPTION	7YF5				REMARKS
27	738-14556-10	.SPRING, METERING LEVER(18G)	1				AP
	738-14556-20	.SPRING, METERING LEVER(30G)	1				AP
	738-14556-30	.SPRING, METERING LEVER(43G)	1				AP
28	787-14521-00	.NEEDLE ASSY, HIGH SPEED	1				
29	738-14522-00	.NEEDLE, IDLE	1				
30	738-14548-00	.PIN, METALING LEVER	1				
31	787-14527-00	.PLATE ASSY, CIRCUIT	1				
32	787-14596-00	.WASHER, PACKIN	1				
33	787-14561-00	.O-RING	1				
34	90179-06N16	NUT	2				
35	7YT-13563-00	GASKET	1				
36	7YA-13585-00	MANIFOLD	1				
37	90116-06N21	BOLT, STUD	2				
38	787-13586-00	JOINT, CARBURETOR 1	1				
39	91317-06030	BOLT	2				
40	7YK-13566-00	GASKET	2				
41	787-14291-00	BRACKET 1	1				
42	97007-06014	BOLT	1				
43	92907-06600	WASHER, PLATE	1				
44	90123-06002	BOLT	1				
45	95307-06700	NUT	1				
46	90446-09118	HOSE	1				
47	90467-08003	CLIP	2				
48	7YF-14453-03	JOINT, AIR CLEANER 1	1				
49	7YA-13556-00	GASKET, MANIFOLD	1				

NUMERICAL INDEX

PART NO.	REF. NO.	PART NO.	REF. NO.	PART NO.	REF. NO.	PART NO.	REF. NO.	PART NO.	REF. NO.	PART NO.	REF. NO.
787-11111-04	1 - 1	787-14291-00	3 - 41	90116-06N21	3 - 37						
7YA-11161-00	1 - 10	7YF-14453-03	3 - 48	90123-06002	3 - 44						
7YA-11162-00	1 - 11	787-14501-00	3 - 1	90179-06N16	3 - 34						
7ET-11181-10	1 - 2	738-14517-00	3 - 12	90179-08N15	1 - 5						
7ET-11311-00	1 - 7	787-14518-00	3 - 13		1 - 9						
7YK-11351-00	1 - 8	787-14521-00	3 - 28	90179-12659	6 - 7						
7YP-11400-00	2 - 1	738-14522-00	3 - 29	90201-06674	6 - 10						
J67-11412-00	2 - 2	738-14523-00	3 - 22	90201-080E2	1 - 4						
787-11413-00	2 - 3	787-14527-00	3 - 31	90209-20159	2 - 8						
	2 - 5	738-14528-00	3 - 24	90280-03N00	6 - 6						
7YP-11422-00	2 - 4	738-14529-00	3 - 23	90446-09118	3 - 46						
7YF-11611-00	2 - 12	738-14531-00	3 - 25	90467-08003	3 - 47						
7YF-11611-B0	2 - 12	738-14533-00	3 - 26	90468-12N00	2 - 14						
7YF-11611-C0	2 - 12	738-14536-00	3 - 15	90506-14N01	4 - 7						
7YF-11611-D0	2 - 12	738-14537-00	3 - 16	91317-06018	6 - 8						
7YF-11611-E0	2 - 12	7EN-14538-00	3 - 14	91317-06030	3 - 39						
7YF-1161A-00	2 - 12	738-14545-00	3 - 20	91317-06045	5 - 5						
7YF-1161A-A0	2 - 12	738-14546-00	3 - 6	91317-06060	5 - 6						
7YF-1161A-B0	2 - 12	738-14547-00	3 - 8	92907-06100	6 - 9						
7YF-1161A-C0	2 - 12	738-14548-00	3 - 30	92907-06600	3 - 43						
7YF-1161A-D0	2 - 12	738-14551-00	3 - 19	92907-08100	4 - 5						
7YF-1162A-00	2 - 12	738-14552-00	3 - 18	93102-20N03	2 - 17						
7YF-1162A-A0	2 - 12	738-14553-00	3 - 17	93306-30445	2 - 16						
7YF-1162A-B0	2 - 12	738-14555-00	3 - 10	93310-214T1	2 - 15						
787-11631-03-97	2 - 11	738-14556-00	3 - 27	93310-420B1	2 - 9						
787-11631-03-98	2 - 11	738-14556-10	3 - 27	93606-20044	5 - 2						
787-11631-03-99	2 - 11	738-14556-20	3 - 27	94702-00193	1 - 6						
787-11631-13-05	2 - 11	738-14556-30	3 - 27	95307-06700	3 - 45						
787-11631-13-10	2 - 11	738-14557-00	3 - 4	95307-08600	4 - 6						
787-11631-13-15	2 - 11	738-14557-10	3 - 7	95607-08325	4 - 4						
787-11631-13-20	2 - 11	787-14561-00	3 - 33	95617-08640	1 - 3						
131-11633-00	2 - 13	7EN-14567-00	3 - 9	95617-08645	5 - 4						
787-11635-13	2 - 11	738-14568-00	3 - 3	97007-06014	3 - 42						
787-11635-13-30	2 - 11	738-14569-00	3 - 11	98507-05020	6 - 4						
787-11635-13-35	2 - 11	738-14577-00	3 - 2								
787-11635-13-40	2 - 11	738-14592-00	3 - 21								
787-11635-13-45	2 - 11	787-14596-00	3 - 32								
787-11636-13	2 - 11	738-14597-00	3 - 5								
787-11636-13-55	2 - 11	7YU-14610-00	4 - 1								
787-11636-13-60	2 - 11	7YA-14613-00	4 - 3								
7F6-11651-02	2 - 7	7LO-14625-00	4 - 2								
787-11681-00	2 - 6	7ET-15100-02	5 - 1								
7YA-13552-00	5 - 3	787-15385-00	2 - 10								
7YA-13556-00	3 - 49	7YK-82370-00	6 - 11								
7YT-13563-00	3 - 35	7ET-85510-01	6 - 1								
7YK-13566-00	3 - 40	7ET-85520-01	6 - 2								
7YA-13585-00	3 - 36	7ET-85525-00	6 - 3								
787-13586-00	3 - 38	7YT-85650-20	6 - 5								