

EPY-ENGINE

YAMAHA

EPY

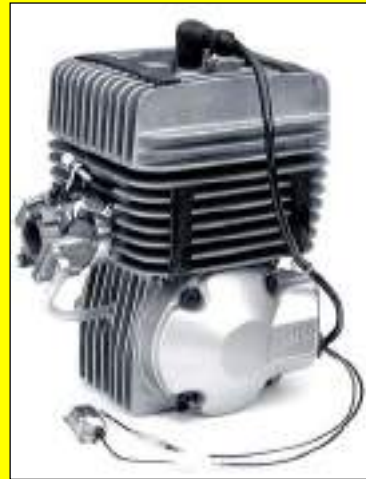
**ENGINE
PART
YAMAHA**



Bearing Piston [Little End]
Bearing Clutch
Bearing Main
Battery,Charger & Mounting KT100SEC
Clutch Parts
Crankcase & Parts KT100J & S
Crankshaft & Parts KT100J & S
Cylinder Head
Cylinder KT100J & S
Cylinder KT100SEC
Gaskets Head
Gaskets Cylinder
Ignition Parts
Piston & Parts
Seals
Stator , Rotor & TCI
KT100SEC Engine Parts
Clutch
Ignition
Stater Motor

000

**PART
NUMBER**



Page EPY-5-10-15
Page EPY-18
Page EPY-5-10-16
Page EPY-27
Page EPY-18-26
Page EPY-4-9-16
Page EPY-5-10-16
Page EPY-4-9-15
Page EPY-4-9-15
Page EPY-21
Page EPY-4-6-9-14-15-21
Page EPY-4-6-9-14-15-21
Page EPY-4-7-9-11-17-25
Page EPY-5-10-15-19
Page EPY-5-10-16-22
Page EPY-4-7-8-10-11-17-25
Page EPY-20
Page EPY-26
Page EPY-25
Page EPY-24

ENGINE YAMAHA



KT100S YAMAHA ENGINE

BORE 52mm TO Max 53mm

Yamaha Genuine Pistons & Ring Only Go To 52.75mm

KSI SUPER BLUE PISTONS START 52.05 TO 53.00mm

New Titanium Coated KSI Rings Start 52.05 To 53.00mm

STROKE 46mm

Displacement 97.6cc On Standard Bore

Maximum HP	13.5 HP/10,000 RPM	
Compression Ratio	7.9 : 1	
Ignition Timing	KT100S	KT100SC
	28 Deg B.T.D.C.	25 Deg B.T.D.C.
Piston Clearance	0.03-0.035 mm [0.0012-0.0014 INCH]	
Ring End Gap	0.40-0.50 mm [0.0157-0.0197 INCH]	

TORQUE SETTINGS

CYLINDER	22 Nm [2.2 mkg , 16 ft lb]
CYLINDER HEAD	20 Nm [2.0 mkg , 14 ft lb]
AIR GAP IGNITION Rotor To Stator	0.4 mm [0.016 IN] TO .05mm [0.020 IN]

ENGINE YAMAHA KT100J



KT100J YAMAHA ENGINE

BORE 50mm TO Max 51mm

Yamaha Genuine Pistons & Ring Only Go To 50.65mm

KSI PISTONS START 50.05 TO 51.00mm

KSI Rings Start 50.05 To 51.00mm

Kartech Rings Start 50.00 To 51.00mm

STROKE 50mm

Displacement 98.1 cc On Standard Bore

Maximum HP	
Compression Ratio	7.6:1cc
Ignition Timing	20 Deg B.T.D.C
Piston Clearance	0.03-0.035mm [0.0012-0.0014 INCH]
Ring End Gap	0.15-0.35mm [0.0059-0.0138 INCH]

TORQUE SETTINGS

CYLINDER	20 Nm [2.0 mkg , 14 ft lb]
CYLINDER HEAD	
AIR GAP IGNITION Rotor To Stator	

AKA CONTROLLED MUFFLERS

CLUBMAN KT100S MUFFLER



ZAKA39S

Different Spring Secure Hooks

Different End Cap than a J Muffler



CLUBMAN & FORMULA AUSTRALIA CONTROLLED MUFFLER

EPE003B3



POWERMAC STAINLESS HEADERS

205mm X 34mm ID

EPE0141

205mm X 36mm ID

EPE014A

125mm X 36mm ID

EPE014B



1.3/4" SOLID PIPE MADE FROM STAINLESS STEEL TUBE & IN 5mm INCREMENTS FROM 80mm TO 140mm

YAMAHA KT100J MUFFLER



ZAKA14

ORIGINAL J MUFFLER UP TO 2006

Different Spring Secure Hooks

Different End Cap than a S Muffler

LATEST J MUFFLER 2006 ON HAS S END

All KT100J CLASS'S in AKA Kart Racing

EPE003B2



POWERMAC STAINLESS HEADERS

205mm X 34mm ID

EPE0141

Note Up to 2006 early KT100J muffler uses the original expanded solid tube .
2006 on the flex is the same as the new clubman controlled mufflers.

SOLID EXHAUST FLEX IN 10MM INCREMENTS

EPE025/60 , EPE025/70 , EPE025/80

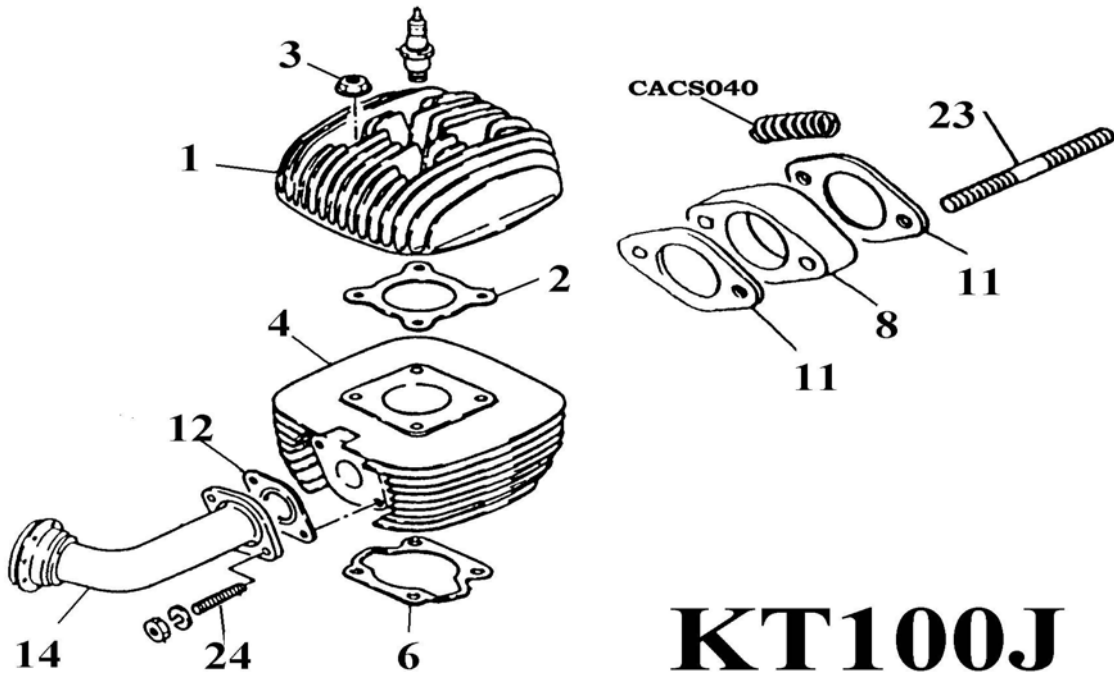
EPE025/90 , EPE025/100 , EPE025/110

EPE025/120 , EPE025/130 , EPE025/140

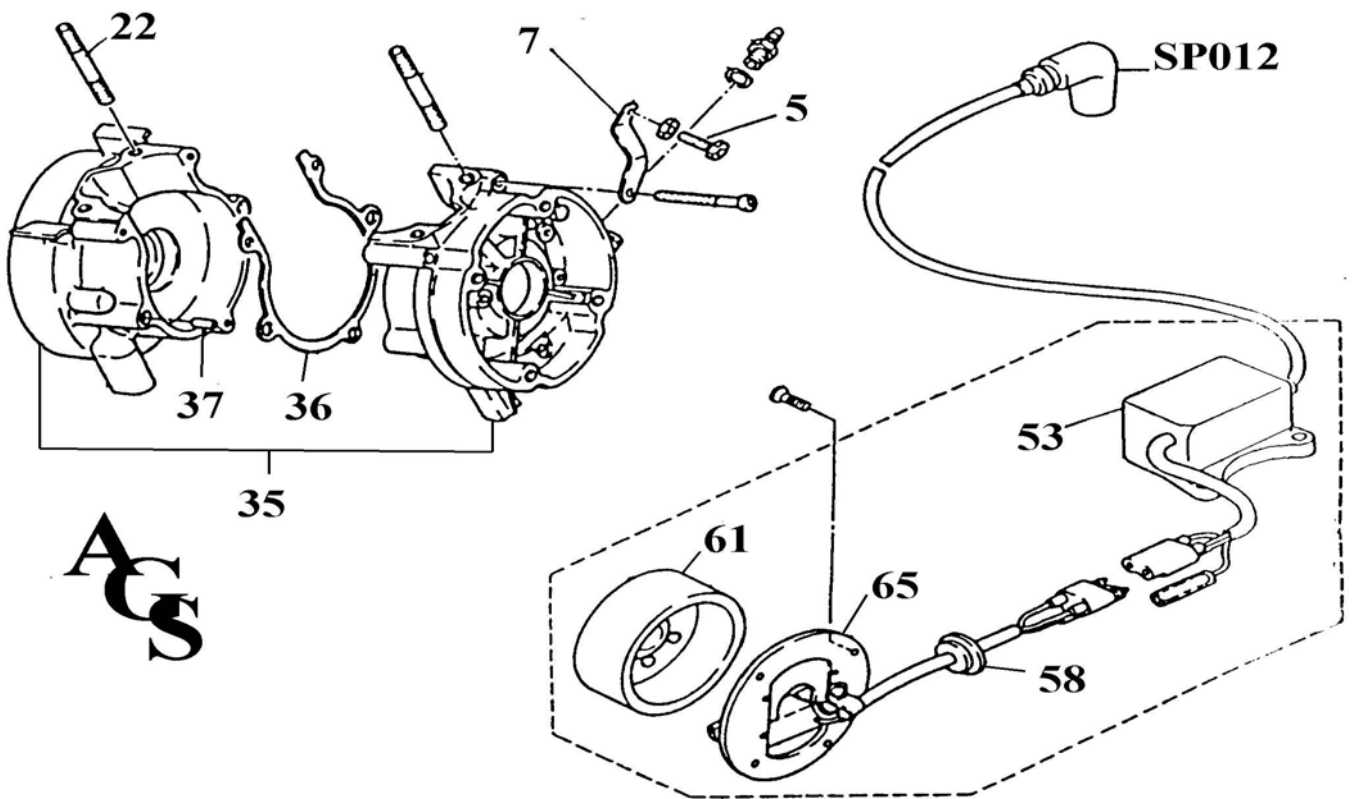


140mm-130mm-120mm-110mm-100mm-90mm-80mm-70mm-60mm

ENGINE SCHEMATICS

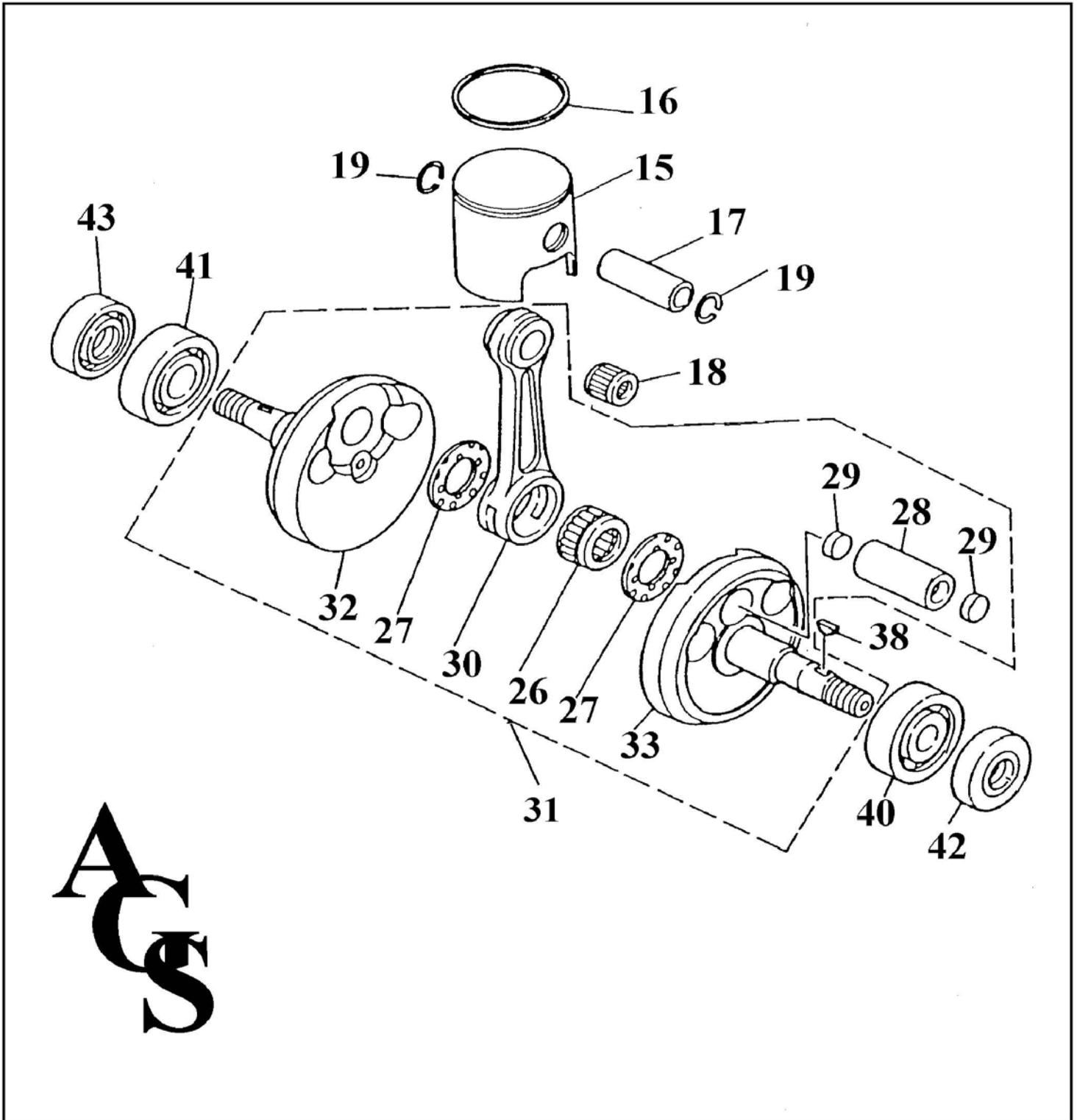


KT100J YAMAHA



AGS

KT100J CRANK SCHEMATRICS



GASKET YAMAHA KT100J



GASKET MATERIAL HIGH SEALING PROPERTIES

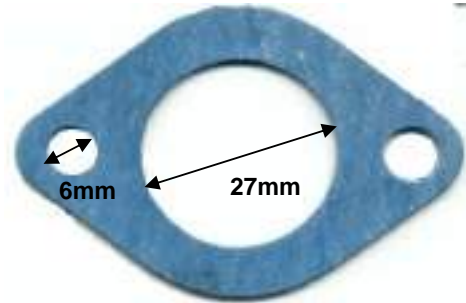
Cylinder Base Gasket

- EPY506A1 [0.0025" SHIM PLASTIC GREEN]
- EPY506A2 [0.0025" SHIM NONEX WHITE]
- EPY506A [0.005"/.012 ELEPHANTIDE BROWN]
- EPY506B [0.010"/.25mm ELEPHANTIDE BROWN]
- EPY506B1 [0.010"/.25mm NOMEX WHITE]
- EPY5061 [0.015"/.4mm BLUE]
- EPY506AA [0.020"/.5mm ELEPHANTIDE BROWN]
- EPY50611 [0.015"/.38mm ELEPHANTIDE BROWN]
- EPY506C [0.031"/.8mm ELEPHANTIDE BROWN]



Exhaust Gasket
Alloy With Copper Sealing Ring

EPY511B



Phenolic Block Gasket

EPY691



GOOD SEALING GASKET MATERIAL
VERY LOW COMPRESSION
[ELEPHANTIDE]
WHITE MATERIAL [NOMEX]
SAME PROPERTIES AS THIS
BROWN MATERIAL



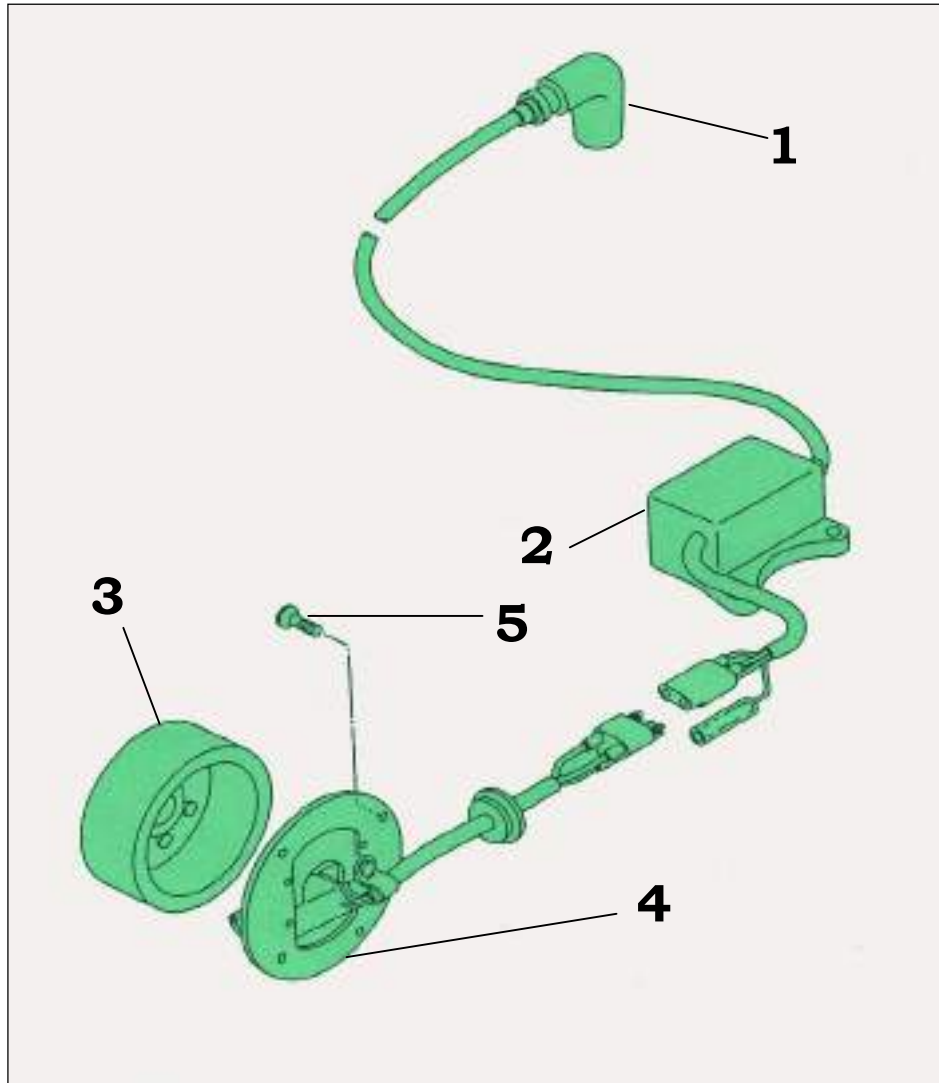
Head Gasket

EPY502 STD

- EPY502A [.004"/.1mm]
- EPY502B [.008"/.2mm]
- EPY5021 [.016"/.33mm]

YAMAHA KT100J IGNITION

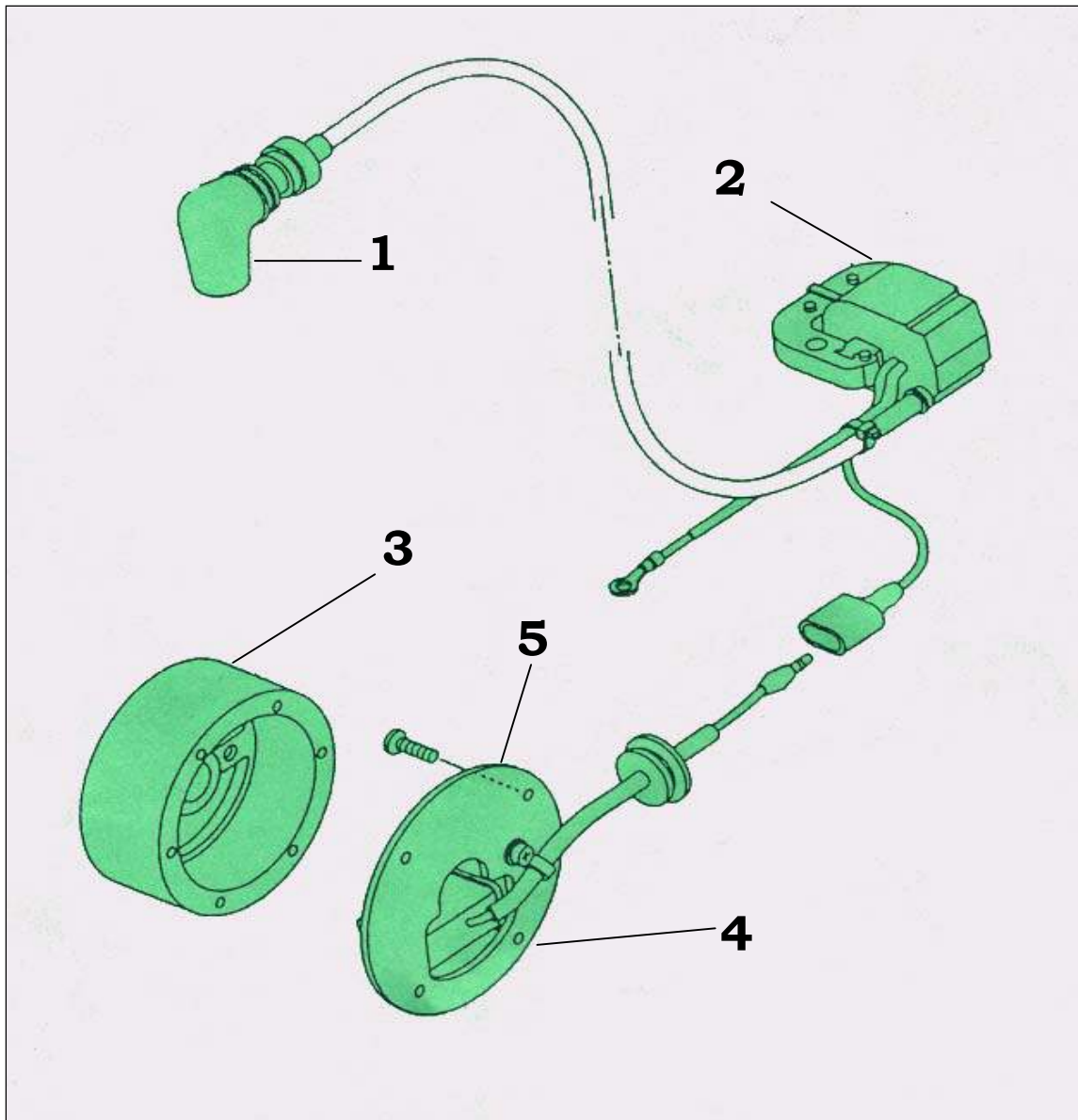
EARLY C.D.I. [BLACK BOX] SYSTEM



1	SP010	SPARK PLUG CAP	1M1-82370-30
2	EPY537	C.D.I. BLACKBOX	788-85540-50
3	EPY536	ROTOR	7G9-85550-00
4	EPY535	STATOR	788-85510-50
5	EPY700	SCREW	98707-05016

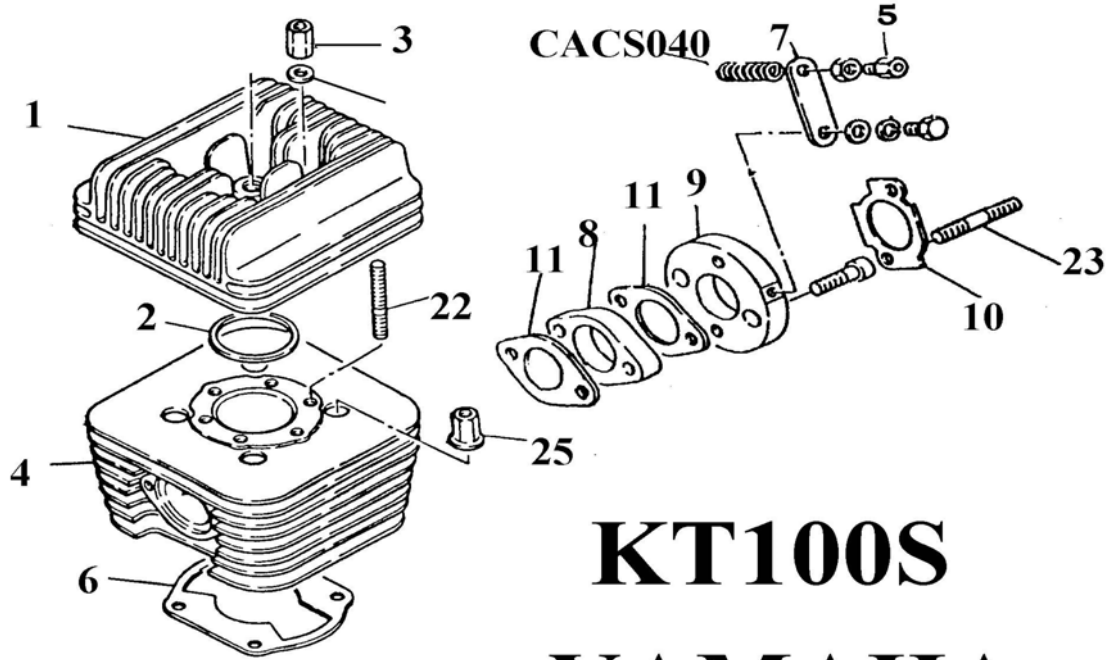
YAMAHA KT100J IGNITION

LATE T.C.I. SYSTEM



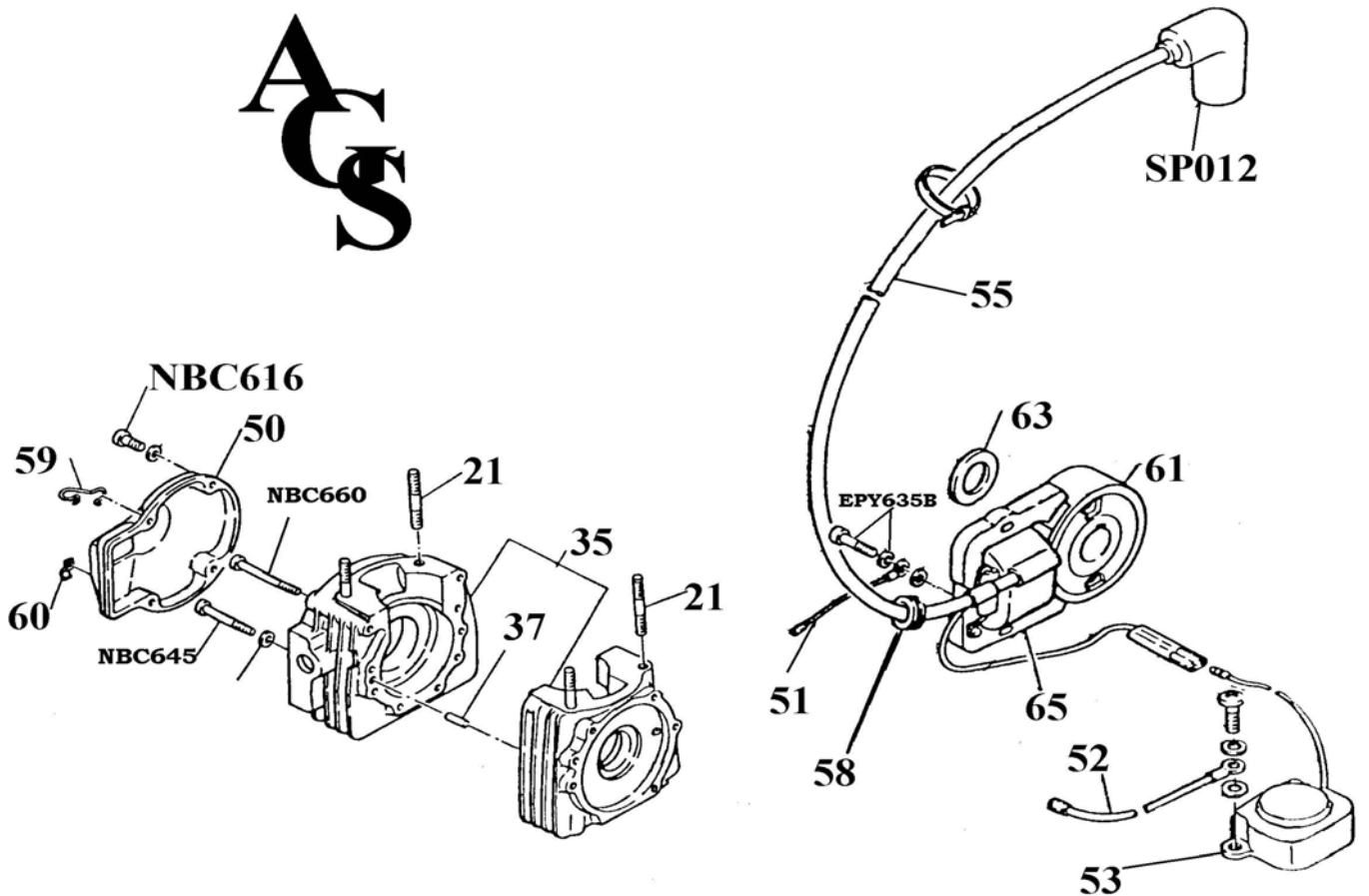
1	SP010	SPARK PLUG CAP	1M1-82370-30
2	EPY537A	T.C.I. BLACKBOX	7G9-85640-00
3	EPY536A	ROTOR	7G9-85650-00
4	EPY535A	STATOR	7G9-85510-00
5	EPY700	SCREW	98707-05016

ENGINE SCHEMATICS

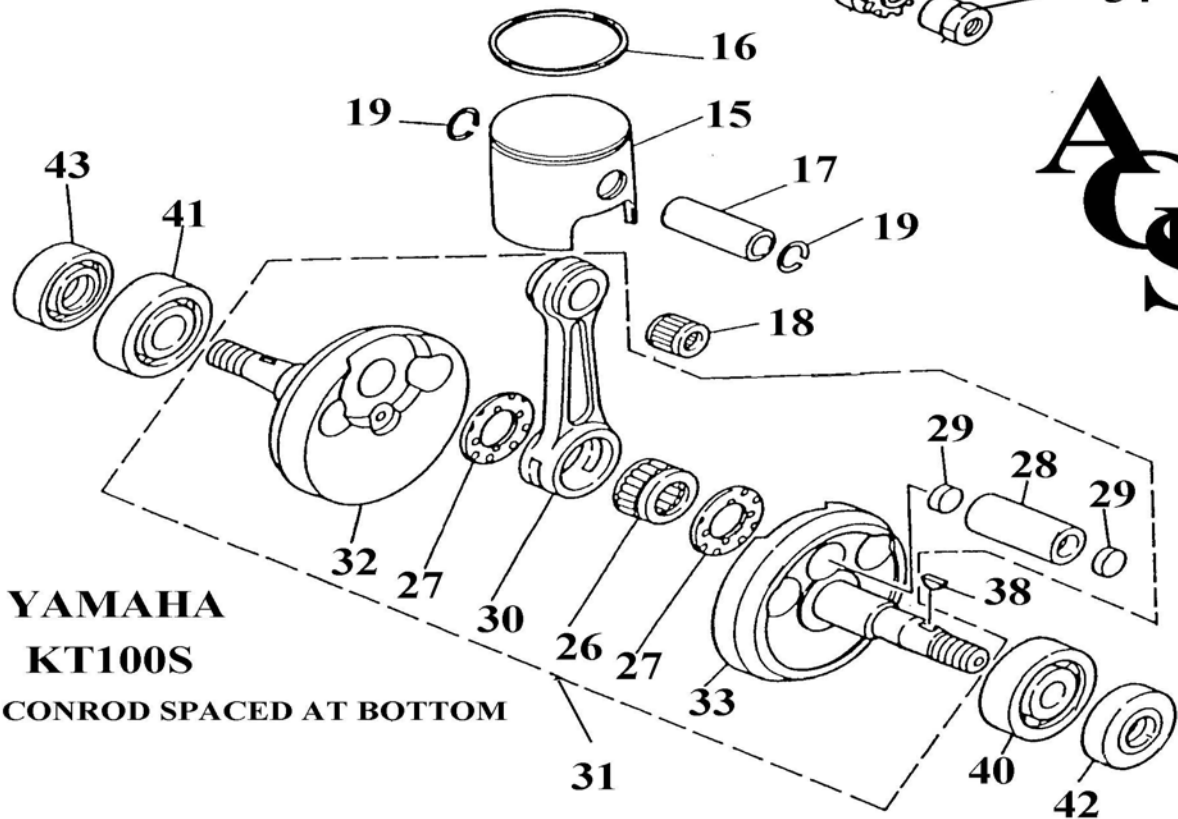
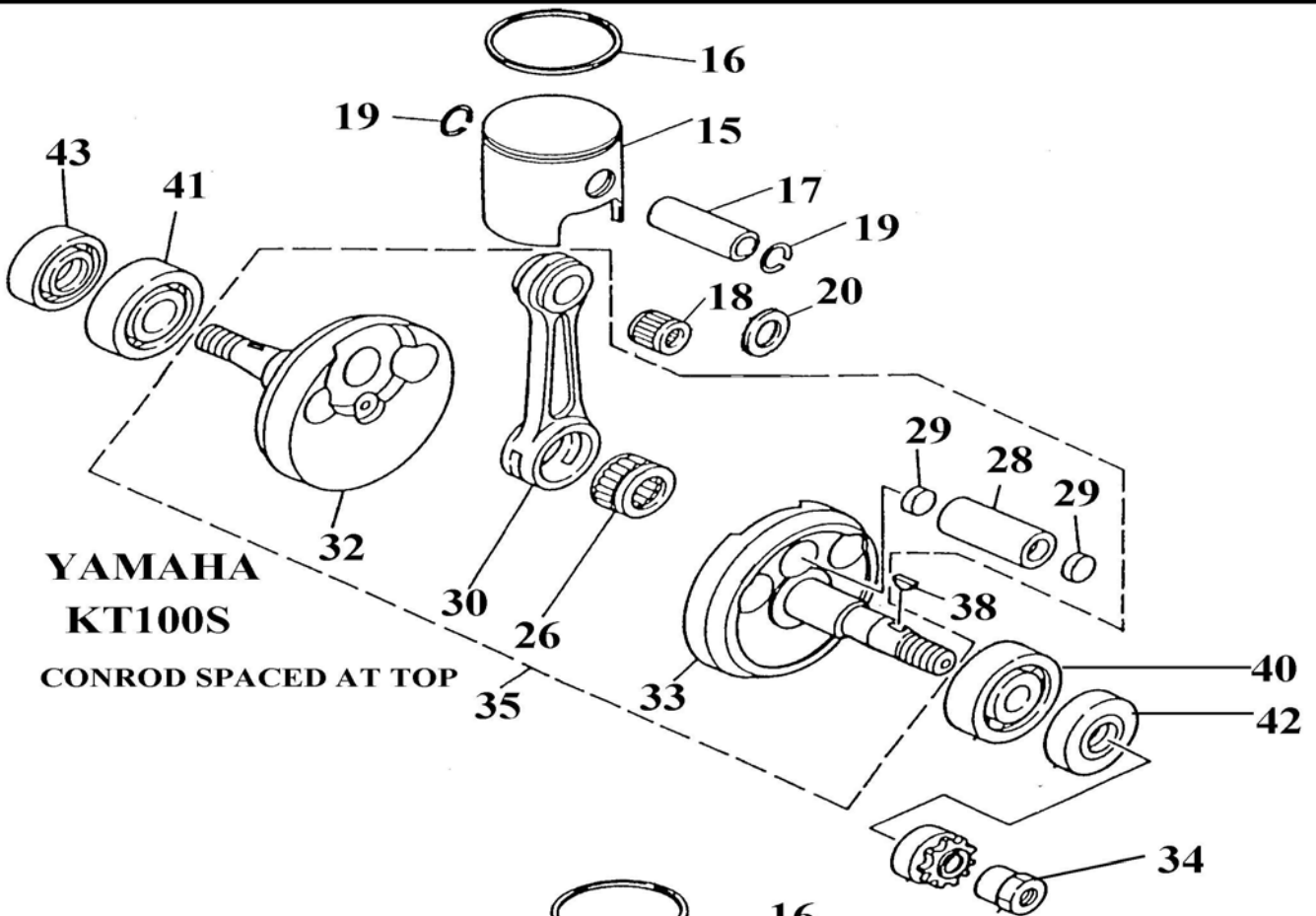


KT100S YAMAHA

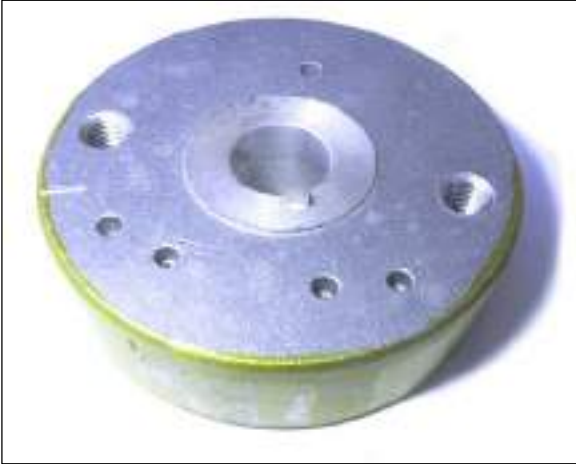
AGS



ENGINE SCHEMATICS



PRD/YAMAHA KT100S NEW IGNITION



EPPR9046A



EPPR9046A

The new PRD Ignition system [OPPAMA] has developed primary for the electric start engine. to give a much better spark during slower cranking while starting via the electric starter.

This Ignition is legal to compete in AKA competition in the YAMAHA KT100S

The OPPAMA Ignition has a flatter inition curve than the genuine ignition, which reportedly under certain contions the engine performs better.

Yamaha Non Genuine Parts

KT100J & KT100S



KT100J

PISTONS	50.00mm-51.00mm
RINGS	50.00mm-51.00mm
PISTON CLIPS	WITH EARS & EARLESS
GASKETS	CYLINDER BASE , HEAD , EXHAUST & CARBURETOR
BEARINGS	BIG END , LITTLE END & MAINS
SEALS	STANDARD TYPE & TEFLON INNER RING TYPE

KT100S

PISTONS	52.00mm-53.30mm
RINGS	52.00mm-53.30mm , KARTECH , KSI & KSI TITAM
PISTON CLIPS	WITH EARS & EARLESS
GASKETS	CYLINDER BASE , HEAD , EXHAUST & CARBURETOR
BEARINGS	BIG END , LITTLE END & MAINS
SEALS	STANDARD TYPE & TEFLON INNER RING TYPE
BIG END PINS	KSI KITS
STUDS	STEPPED STUDS TO REPAIR STRIPPED THREADS
CONROD	KSI MEDIUM
ELECTRICS	STATOR & ROTOR

Yamaha Genuine Parts KT100J & KT100S



Complete range of GENUINE YAMAHA parts direct from Yamaha
& supplied in unopened Yamaha packaging to ensure the customer
receives the correct Yamaha part untouched

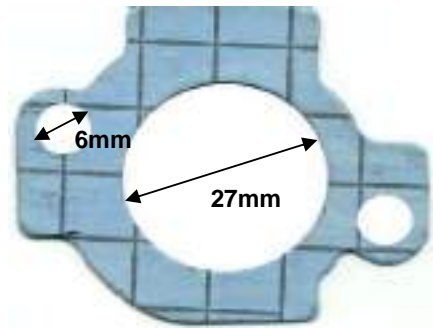
GASKET YAMAHA KT100S & KT100SEC



**GASKET MATERIAL HIGH SEALING PROPERTIES
BLUE**

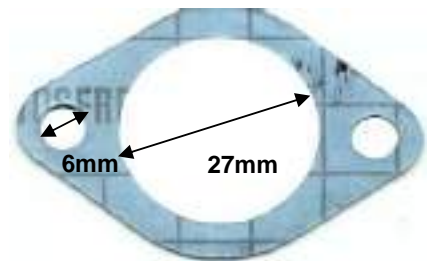
Cylinder Base Gasket

- EPY604A [0.0025" SHIM PLASTIC GREEN]
- EPY604A1 [0.0025" SHIM NOMEX WHITE]
- EPY604B1 [0.005"/.012 ELEPHANTIDE BROWN]
- EPY604C [0.010"/.025 ELEPHANTIDE BROWN]
- EPY604C1 [0.010"/.025 NOMEX WHITE]
- EPY604D [0.012"/.3mm BLUE]
- EPY6041 [0.015"/.4mm ELEPHANTIDE BROWN]
- EPY604E1 [0.020"/.5mm ELEPHANTIDE BROWN]
- EPY604E2 [0.032"/.8mm ELEPHANTIDE BROWN]
- EPY604F [0.040"/1.0mm BLUE]



Carburetor to Alloy Adaptor

- EPY685 [.4mm]
- EPY685B [1.0mm]



Phenolic Block Gasket

EPY688



**GOOD SEALING GASKET MATERIAL
VERY LOW COMPRESSION
[ELEPHANTIDE]
WHITE MATERIAL [NOMEX]
SAME PROPERTIES AS THE
BROWN MATERIALS**



[NOT USED ON KT100SEC ENGINE]

Head Gasket

- EPY602 [genuine]
- EPY602C [.55mm]kartech
- EPY602C1 [.75mm]kartech
- EPY602C2 [.9mm]kartech
- EPY602D [1.2mm]kartech

ENGINE PARTS YAMAHA	FIG	YAMAHA J	YAMAHA J	YAMAHA S	YAMAHA S
		GENUINE	NON GENUINE	GENUINE	NON GENUINE
CYLINDER HEAD PARTS					
HEAD ASSEMBLY	1	EPY501		EPY600	
FIN BLOCKS [LONG]					EPY603C
HEAD GASKET .004"/.1mm	2		EPY502A		
HEAD GASKET .008"/.2mm	2		EPY502B		
HEAD GASKET .012"/.3mm	2	EPY502			EPY602A
HEAD GASKET .020"/.5mm	2				EPY602B
HEAD GASKET .024"/.6mm	2				EPY602C
HEAD GASKET .029"/.7.5mm	2				EPY602C1
HEAD GASKET .032"/.8mm	2			EPY602	
HEAD GASKET .038"/9mm	2				EPY602C2
HEAD GASKET .047"/1.2mm	2				EPY602D
HEAD NUT	3	EPY508		EPY606	

CYLINDER PARTS		KT100J GEN.	KT100J NON GEN.	KT100S GEN.	KT100S NON GEN.
CYLINDER ASSEMBLY	4	EPY504		EPY603	
ADJUSTER T/CABLE	5	EPY693B		EPY693B	BR211
BASE GASKET .0025"/.08mm	6		EPY506A1		EPY604A
BASE GASKET .005"/.12mm	6		EPY506A		EPY604B
BASE GASKET .010"/.25mm	6		EPY506B		EPY604D
BASE GASKET .015"/.38mm	6				EPY6041
BASE GASKET .015"/.38mm	6	EPY506	EPY5061		EPY604
BASE GASKET .020"/.50mm	6		EPY506AA		EPY604E
BASE GASKET .032"/.8mm	6				EPY604E2
	6				
BRACKET THROTTLE CABLE	7	EPY693		EPY693A	
CARBY PHENOLIC BLOCK	8	EPY697		EPY690	
CARBY ALU BLOCK	9			EPY686	
CARBY MOUNT GASKET	10	EPY691		EPY685	EPY685B [1mm]
CARBY PHENOLIC GASKET	11	EPY691		EPY688	
EXHAUST GASKET	12	EPY511	EPY511B	EPY609	
EXHAUST NUT	13	EPY512	NBN8	EPY512	NBN8
FIN BLOCKS [SHORT]				EPY603D	EPY603B
EXHAUST HEADER SHORT	14				EPE014B/D/E Note 3
EXHAUST HEADER	14	EPY510	EPE014 Note 4	EPY510	EPE014A
PISTON	15	EPY539 Note 2	EPY542 Note 2	EPY650 Note 1	EPY654 Note 1
PISTON RING	16	EPY540 Note 2	EPY541/543 Note 2	EPY651 Note 1	EPY653/655 Note 1
PISTON PIN	17	EPY529	EPY529A	EPY529	EPY529A
PISTON L/E BEARING STD [16.2]	18	EPY627		EPY627	EPY627C
PISTON L/E BEARING WIDE	18			EPY627A [17.25]	EPY627B [18.2]
PISTON CLIP WITH EARS	19	EPY643	EPY6431	EPY643	EPY6431
PISTON CLIP EARLESS	19	EPY643A	EPY643B	EPY643A	EPY643B
Note 1 FULL LIST OF KT100S PISTONS & RINGS		Note 3 EPE014B-Short Powermac 36mm EPE014D ---Short DPE 35mm EPE014E ---Short RAAP 35mm		Note 4 EPE014 35MM x 205MM EPE0141 34MM x 205MM	
Note 2 FULL LIST OF KT100J PISTONS & RINGS					

ENGINE PARTS YAMAHA		F I G	YAMAHA J GENUINE	YAMAHA J NON GENUINE	YAMAHA S GENUINE	YAMAHA S NON GENUINE
CYLINDER PARTS (cont)						
PISTON L/E SPACER ALU	20				EPY631	
PISTON L/E SPACER STEEL	20				EPY631A	
STUD CYLINDER	21	EPY507			EPY603A	
STUD CYLINDER/HEAD	22		NBC670		EPY605	Note [1]
STUD CARBY	23	EPY694A			EPY694B	
STUD EXHAUST	24	EPY610			EPY610	
NUT CYLINDER	25	EPY508			EPY606	
NUT CYLINDER [CYLINDRICAL]	25					EPY606A Note 2
HEAD NUT SEALING	3		EPE040			EPE040

CRANKSHAFT PARTS						
B/END BEARING STD	26	EPY523			EPY626	
B/END BEAR [SPACED BOTT]	26A				EPY626A	EPY626B
B/END BEARING SPACER	27	EPY518			EPY518	
B/END PIN	28	EPY517			EPY644	
B/END PIN PLUG	29				EPY645	EPY645A
B/END PIN/PLUG SET						EPY644A
CONROD BARE LIGHT	30	EPY531			EPY531	
CONROD BARE MEDIUM	30				EPY625	
CRANK SHAFT ASS	31	EPY514			EPY622	
C/SHAFT ASS SHORT DRIVE	31				EPY622A	
C/SHAFT HALF IGN SIDE	32	EPY516			EPY623	EPY6231
C/SHAFT HALF DRIVE SIDE	33	EPY515			EPY624	EPY6241
C/SHAFT HALF DRIVE SHORT	33				EPY624A	EPY624A1
C/SHAFT NUT DRIVE STD	34	EPY533	EPY533A		EPY533	EPY533A
C/SHAFT NUT DRIVE SHORT	34				EPY533C	EPY533B
CRANKCASE ASS	35	EPY519			EPY612	
CRANKCASE GASKET	36	EPY521	EPY521A			
CRANKCASE DOWEL	37	EPY520			EPY613	
KEY DRIVE SPROCKET	38	EPY532			EPY532	
KEY IGNITION	39	EPY527			EPY532	
MAIN BEARING DRIVE	40	EPY524	EPY524B		EPY524	EPY524B
MAIN BEARING IGNITION	41	EPY525	EPY525A		EPY524	EPY524B
SEAL DRIVE KT100J [20 X 40 X 8]	42	EPY526A			EPY526	
SEAL DRIVE KT100J [20 X 40 X 8]	42		EPY526A2 [TEFLON]			
SEAL DRIVE KT100S [20 X 36 X 8]	42				EPY526	
SEAL DRIVE KT100S [20 X 36 X 7]	42					EPY526A1
SEAL IGNITION [20 X 36 X 8]	43	EPY526			EPY526	
SEAL IGNITION [20 X 36 X 7]Teflon	43	EPY526A1				EPY526A1

Notes

[CLICK ON PART NUMBERS OR NOTES](#)

Note [1]

EPY605A Stepped Stud To Repair Stripped Cylinder Threads

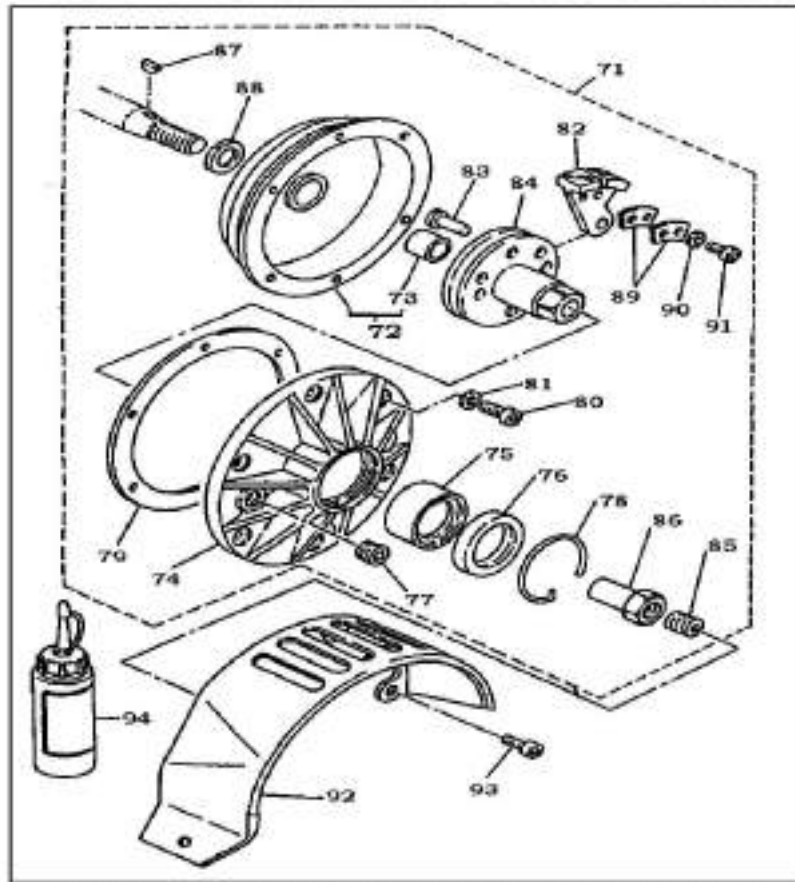
Note [2]

Can Use Wheel Nut WH105

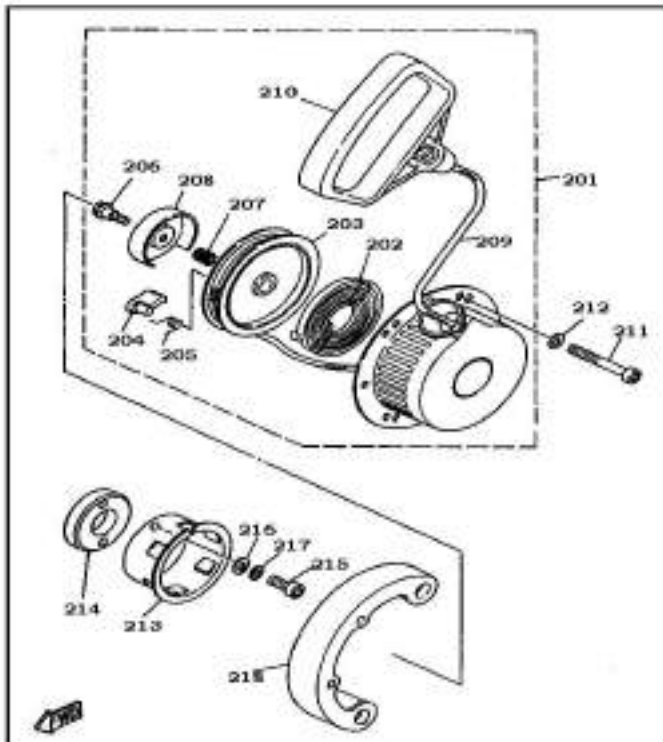
ENGINE PARTS YAMAHA	F I G	YAMAHA J	YAMAHA J	YAMAHA S	YAMAHA S
		GENUINE	NON GENUINE	GENUINE	NON GENUINE
IGNITION PARTS					
IGN COVER	50			EPY618 Note [2]	
IGN EARTH LEAD LONG	51			EPY621C	
IGN EARTH LEAD SHORT	52			EPY621B	
IGN TCI/CDI MODULE	53	EPY537		EPY638	EPY638A
IGN LEAD JOINER	54		EPY639A		EPY639A
IGN LEAD REPLACEMENT	55		EPY639		EPY639
IGN COVER GROMMET	56			EPY634A	
IGN C/CASE RUBBER PLU	57			EPY634B	
IGN C/CASE GROMMET	58			EPY634	
IGN CLIP LEAD S/PLUG	59			EPY621A	
IGN CLIP LEAD TCI	60			EPY621	
IGN ROTOR	61	EPY526		EPY636	EPPR9046/46A
IGN ROTOR NUT	62	EPY528			
IGN ROTOR NUT WASHER	63			EPY640	
IGN TCI BRACKET	64				EPY638E
IGN STATOR	65	EPY535		EPY635 Note [1]	EPPR9042B

ADDITIONAL PARTS		YAMAHA CLUTCH PARTS			
CLUTCH ASSEMBLY	71	EPY899	7YB-16600-09		
CLUTCH HOUSING	72	EPY900	7F6-16614-02	7F6-16614-01	
BEARING CLUTCH AXLE	73	EPY902	7F6-16642-01		
CLUTCH HOUSING OUTER	74	EPY910	7F6-16614-01		
BEARING MAIN	75	EPY907	93399-999T0		
SEAL MAIN	76	EPY908	93104-22N00		
PLUG TAPER SCREW	77	EPY911	90344-51005	90344-41N00	
CLIP MAIN HOUSING	78	EPY909	93450-35N00		
GASKET MAIN HOUSING	79	EPY906	7F6-16716-00	7YK-16716-00	
BOLT CLUTCH HOUSING	80	EPY912			
WASHER PLAIN	81	EPY913			
SHOE CLUTCH WEIGHT	82	EPY901	7YB-16623-00		
PIN	83	EPY614			
CARRIER CLUCH WEIGHT	84	EPY615			
SCREW	85	EPY916			
NUT	86	EPY917			
KEY WOODRUFF	87	EPY532			
SPACER	88	EPY918	7F6-16397-00		
WEIGHT SHOE	89	EPY903	7F6-16624-00		
WASHER SHOE WEIGHT	90	EPY905	90201-04N06		
BOLT SHOE WEIGHT	91	EPY904	91317-04010		
COVER CLUTCH HOUSING	92	EPY918	7F6-16397-00		
CLUTCH OIL YAMAHA	94	EPY920	90890-69917		
PULL START ASS/HANDLE	201	EPY940	7ET-15710-00		
SPACER/BRACKET PULL/ENGINE	218	EPY941	7ET-15771-00		
SPACER DRIVE BRACKET IGNITION	214	EPY942	7U5-15724-09		
DRIVE PULL START STATOR	213	EPY943	7U5-15723-09		
Notes		Note[1] EPY635 Early Stator [High Tension Lead Through Crankcase] EPY635A Late Stator [High Tension Lead Through Cover]		Note[2] EPY517 Early Ignition Cover No Lead Hole EPY517A Late Ignition Cover With Lead Hole	

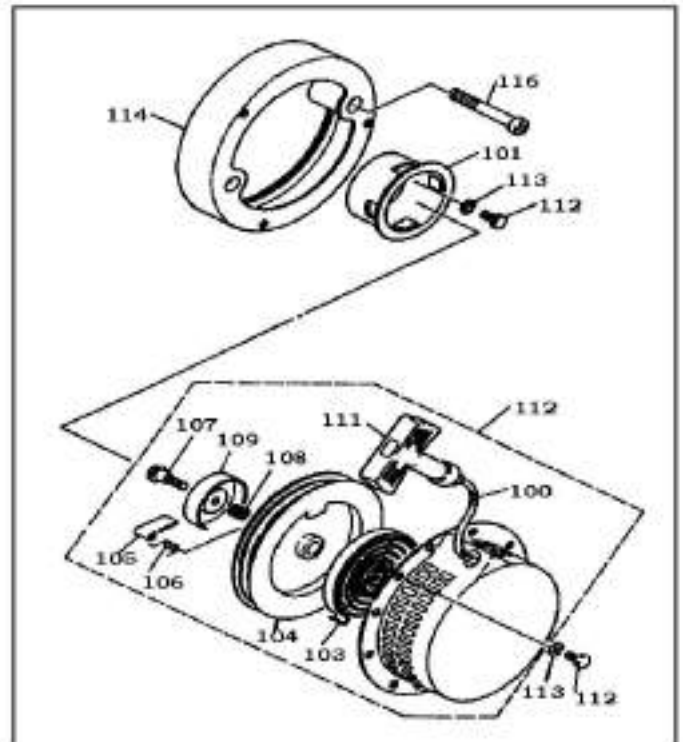
CLUTCH YAMAHA



ORIGINAL YAMAHA CLUTCH ASSEMBLY

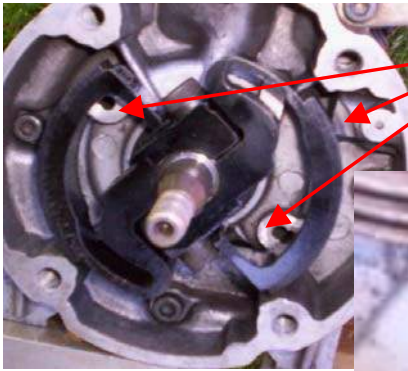


KT100S PULL START



KT100J PULL START

YAMAHA KT100J SS Clutch & Starter



The new SS DRY CLUTCH to suit YAMAHA KT100J
Small amount of matching on the drive side crankcase
to allow the clutch to clear .



CLUTCH ASSEMBLY
part number **EPY860**
CLUTCH DRUM & SPROCKET
12 Tooth
part number **EPY86012T**
13 Tooth
part number **EPY86013T**



STARTER ASSEMBLY
part number **EPY850**



Strike SSS Yamaha KT100J Clutch



Complete Clutch kits

11 Teeth **EPY8600**

12 Teeth **EPY860**

13 Teeth **EPY859**



New Lining assy

EPY863



11 Teeth Sprocket/Drum assy
[Includes Bronze Bush]

EPY86011T



Roller Bearing
12/13 T Drum
EPY860BEAR



Bronze Bush
11T Drum
EPY860BBUSH



Plastic Bush
11T Drum
EPY860PBUSH



12 Teeth Sprocket/Drum assy **EPY86012T**

13 Teeth Sprocket/Drum assy **EPY86013T**

[Includes Roller Bearing]



Drive Nut Inner
EPY861



Drive Nut Lock
EPY862



Starter Motor Drive Shaft with 19mm Female Socket
EPY852



Starter Motor Drive Shaft with 17mm Female Socket
EPY853



Complete Starter Motor Assy. 17mm
[Genuine Yamaha] **EPY851**

Complete Starter Motor Assy. 19mm
[SSS Clutch] **EPY850**

[Battery Acid must be add **GABATTERY/ACID**]

Strike SSS Yamaha KT100S Clutch

SSS Clutch Assy. Fitted to
KT100S YAMAHA Engine
EPY870 10T



EPY850 [starter assy]



Clutch Drum with Removable sprocket
EPY871



Nut to Secure sprocket
Use EPRCL242920 or A



Sprocket
EPY872



Nut Outer lock
EPY876



Nut Inner Adjuster
EPY877



Sprocket Bush
EPY878



Sleeve
EPY879



New Lining assy
EPY873



Retention plate Kit
EPY880

Spacer 0.25 paper
Spanner Special Adjuster
EPY881
TLYSSS001

Grease Syringe [to grease sprocket bush]
EPY882

Yamaha KT100S ITALSPORT CLUTCH



The new ItalSport Red clutch kit to suit all Yamaha short shaft engines. Very easy to fit when following the well layed out fitting instructions. This clutch can supplied as 10 tooth or 9 tooth configurations.

part number **EPY885RED9T**
9 Tooth Sprocket

part number **EPY885RED10T**
10 Tooth Sprocket



Puller to remove lining hub
TLI180
Holding Tool
TLI179



Chain Cover [plastic]
GAC011C

Lining shoe & hub assembly

part number **EPY891**



Clutch drum & sprocket assembly

part number **EPY892**
9 Tooth Sprocket

part number **EPY893**
10 Tooth Sprocket

part number **EPY894**
Bare Drum

Sprocket Only
EPY8929T

EPY89310T

Removable drive sprocket can be replaced .



Bearing roller fitted onto the clutch shoe boss

part number **EPY895**



Nut bronze bush [secondary support for sprocket]

part number **EPY896**



Outer Locking Nut/Starter drive

part number **EPY897**



Nut to secure clutch linings onto the shaft taper
[used only to install shoe lining hub on to original shaft taper]

part number **EPY898**

Yamaha KT100S [long shaft] KT100J ITALSPORT CLUTCH



10T Kit comes with GAC011C chain guard & bolts

The new Italsport Red clutch kit to suit all Yamaha long shaft engines. Very easy to fit when following the well layed out fitting instructions. This clutch can supplied as 10 , 11 12 or 13 tooth configurations.

- part number **EPY885RED10TL**
10 Tooth Sprocket
- part number **EPY885RED11TL**
11 Tooth Sprocket
- part number **EPY885RED12TL**
12 Tooth Sprocket
- part number **EPY885RED13TL**
13 Tooth Sprocket



- Chain Cover [plastic] KT100J **GAC011B**
- Chain Cover [plastic] KT100S **GAC011C**

- TLI180**
Puller to remove lining hub
- TLI179**
Holding Tool

- Lining shoe & hub assembly
part number **EPY891LONG**



- part number **EPY894LONG** [Bare Drum]

- Removable drive sprocket can be replaced .
Sprocket Only
- part number **EPY89210TLONG**
- part number **EPY89211TLONG**
- part number **EPY89212TLONG**
- part number **EPY89213TLONG**



- Bearing roller fitted onto the clutch shoe boss
part number **EPY895**



- Nut bronze bush [secondary support for sprocket]
- part number **EPY896LONG** [To suit 11T,12T&13T]
- part number **EPY896LONG10T** [To suit 10T]



- Outer Locking Nut/Starter drive
part number **EPY897LONG**



- Adjusting Nut
part number **EPY897ALONG**



- Taper lock to secure clutch linings onto the shaft straight section.
part number **EPY898LONG**

[When fitting clutch to KT100S a extra spacer is to be fitted between the shaft step & the inside of the taper lock.]

- part number **EPY898LONGS**

Yamaha KT100S & J long shaft TOMAR CLUTCH

TD22 AKA



10 TOOTH
11 TOOTH
12 TOOTH
13 TOOTH

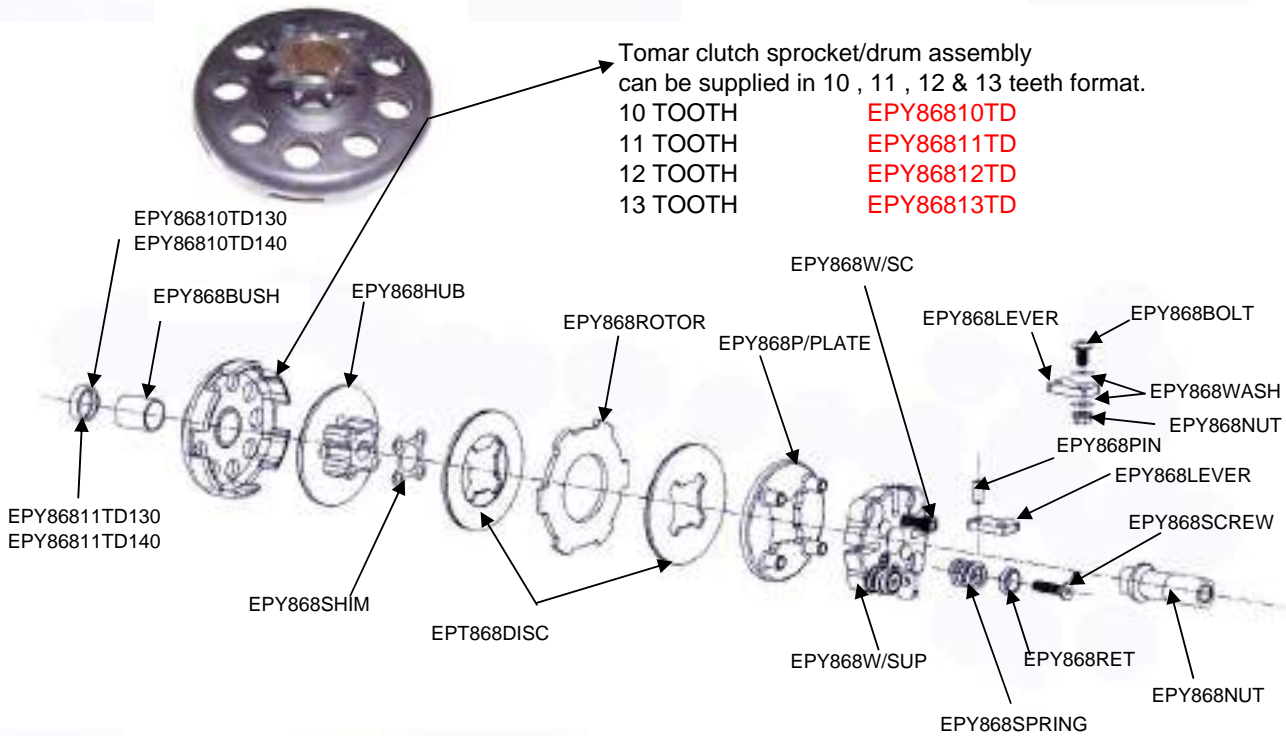
EPY86810
EPY86811T
EPY86812T
EPY86813T



Tomar clutch sprocket/drum assembly can be supplied in 10 , 11 , 12 & 13 teeth format.

10 TOOTH
11 TOOTH
12 TOOTH
13 TOOTH

EPY86810TD
EPY86811TD
EPY86812TD
EPY86813TD



BURRIS STARTER ASSEMBLY

Lightweight unit complete with a dry cell battery.
The drive shaft has a hex key to start the Tomar Clutch and also has 1/2" square to enable a socket to be fitted.



DRY CELL BATTERY
[PTX9BS-ES]

EPG/STARTER



TLCT001



TLCT002

Strike SSS Yamaha KT100S Clutch

ENGINE STOP SWITCH KIT

Consists of

Switch & Panel .

Wiring kit

Easy to fit , attaches to the steering wheel mounting bolts, one wire bolted to engine case for an earth & the second wire connects to the CDI or TCI spare wire .

part number

EPY854



TOOL FOR HOLDING KT100S SSS CLUCH DRUM TO UN DO SPROCKET NUT.

ALSO THIS TOOL CAN BE USED FOR THE ROTAX 125 ENGINE AS WELL.

part number

TLYSSS002

REMOTE STARTERS



THE BURRIS STARTER USES HEX TYPE DRIVE SUITABLE FOR THE TOMAR CLUTCH ASSEMBLIES. A LIGHT WEIGHT UNIT WHICH IS EASY TO USE.

THE BATTERY TYPE IS YTX9-BC or CTX9-BC

BURRIS STARTER ASSY.

[made in USA.]

EPG/STARTER



THE COLEMAN/DPD STARTER USES A SOCKET 17mm or 18mm TYPE DRIVE SUITABLE FOR THE SSS RED [ITALSPORT] , YAMAHA WET & DRY CLUTCH'S A LIGHT WEIGHT UNIT WHICH IS EASY TO USE.

THE BATTERY TYPE IS YTX9-BC or CTX9-BC

COLEMAN STARTER ASSY.

[made in USA.]

Starter drive shaft has adjustable length with 3/8" square drive.

Supplied with 17mm drive socket & 19mm available as extra.

EPG/STARTERDPE

EPG/STARTER19S

[19mm Socket to Suit the Coleman Starter]

ENGINE PARTS Yamaha / Arc	F I G	YAMAHA S PISTON GENUINE	YAMAHA S PISTON KSI	F I G	YAMAHA S RING GENUINE	YAMAHA S RING KSI GOLD	YAMAHA S RING KARKECH
YAMAHA & ARC USE THE SAME PISTON							
51.97	15	EPY650		16			
51.98	15	EPY650A		16			
51.99	15	EPY650B		16			
52.00	15	EPY650B1	EPY654A	16	EPY651		EPY653
52.05	15	EPY650B2	EPY654B	16	EPY6511	EPY656B	EPY653A
52.10	15	EPY650C	EPY654C	16	EPY651A	EPY656C	EPY653B
52.15	16	EPY650C1	EPY654D	16	EPY651A1	EPY656D	EPY653C
52.20	15	EPY650C2	EPY654E	16	EPY651A2	EPY656E	EPY653D
52.25	15	EPY650D	EPY654F	16	EPY651B	EPY656F	EPY653E
52.30	15	EPY650D1	EPY654G	16	EPY651B1	EPY656G	EPY653F
52.35	15	EPY650E	EPY654H	16	EPY651C	EPY656H	EPY653G
52.40	15	EPY650E1	EPY654I	16	EPY651C1	EPY656I	EPY653H
52.45	15	EPY650E2	EPY654J	16	EPY651C2	EPY656J	EPY653I
52.50	15	EPY650F	EPY654K	16	EPY651D	EPY656K	EPY653J
52.55	15	EPY650G	EPY654L	16	EPY651E	EPY656L	EPY653K
52.60	15	EPY650H	EPY654M	16	EPY651F	EPY656M	EPY653L
52.65	15	EPY650I	EPY654N	16	EPY651G	EPY656N	EPY653M
52.70	15	EPY650J	EPY654O	16	EPY651H	EPY656O	EPY653N
52.75	15	EPY650K	EPY654P	16	EPY651I	EPY656P	EPY653O
52.80	15		EPY654Q	16		EPY656Q	EPY653P
52.85	16		EPY654R	16		EPY656R	EPY653Q
52.90	15		EPY654S	16		EPY656S	EPY653R
52.95	15		EPY654T	16		EPY656T	EPY653S
53.00	15		EPY654V	16		EPY656U	EPY653T
53.10	15		EPY654V1	16			
53.20	15		EPY654V2	16			

IMPORTANT NOTES

YAMAHA KT100S PISTONS IN GENUINE OR KSI BRANDS, THE SIZE ON THE TOP OF THE PISTON INDICATES PISTON SIZE.

KARTECH & KSI GOLD PISTON RINGS SHOULD BE ONLY USED SIZE FOR SIZE
e.g. [WHEN YOU USE A 52.00 SIZE PISTON A 52.00 SIZE RING IS RECOMMENDED]

ENGINE PARTS Yamaha	F I G	YAMAHA J PISTON GENUINE	YAMAHA J PISTON KSI	F I G	YAMAHA J RING GENUINE	YAMAHA J RING KSI	YAMAHA J RING KARKECH
KT100J							
50.96	15	EPY539		16	EPY540		
50.98	15	EPY539A		16	EPY540		
50.00	15	EPY539A1		16	EPY540	EPY543A	EPY541
50.05	15	EPY539A2	EPY542B	16	EPY5401	EPY543B	
50.10	15	EPY539A3	EPY542C	16	EPY5402	EPY543C	EPY5411
50.15	15	EPY539A4	EPY542D	16	EPY5403	EPY543D	
50.20	15	EPY539A5	EPY542E	16	EPY5404	EPY543E	EPY541A
50.25	15	EPY539B	EPY542F	16	EPY540A	EPY543F	
50.30	15	EPY539B1	EPY542G	16	EPY540A1	EPY543G	EPY541B
50.35	15	EPY539B2	EPY542H	16	EPY540A2	EPY543H	
50.40	15	EPY539B3	EPY542I	16	EPY540A3	EPY543I	EPY541C
50.45	15	EPY539B4	EPY542J	16	EPY540A4	EPY543J	
50.50	15	EPY539C	EPY542K	16	EPY540B	EPY543K	EPY541D
50.55	15	EPY539D	EPY542L	16	EPY540C	EPY543L	
50.60	15	EPY539E	EPY542M	16	EPY540D	EPY543M	EPY541E
50.65	15	EPY539F	EPY542N	16	EPY540E	EPY543N	
50.70	15		EPY542O	16		EPY543O	EPY541F
50.75	15		EPY542P	16		EPY543P	
50.80	15		EPY542Q	16		EPY543Q	EPY541G
50.85	15		EPY542R	16		EPY543R	
50.90	15		EPY542S	16		EPY543S	EPY541H
50.95	15		EPY542T	16		EPY543T	
51.00	15		EPY542U	16		EPY543U	EPY541I
	15			16			
	15			16			
	15			16			
	15			16			

IMPORTANT NOTES

YAMAHA KT100J PISTONS IN GENUINE OR KSI BRANDS, THE SIZE ON THE TOP OF THE PISTON INDICATES PISTON SIZE.

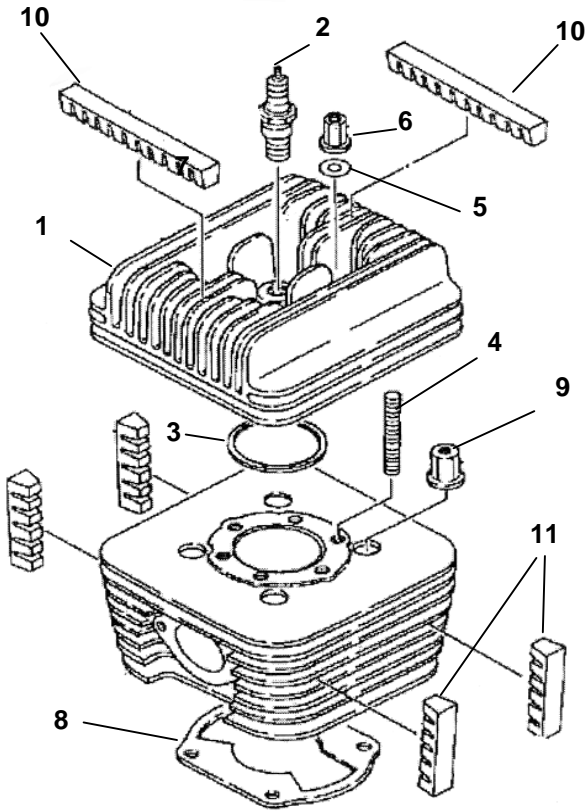
YAMAHA KT100SEC ELECTRIC START 100cc 2 STROKE ENGINE



EPY-20 yamaha KT100SEC

www.agskartparts.com.au

YAMAHA KT100SEC ELECTRIC START

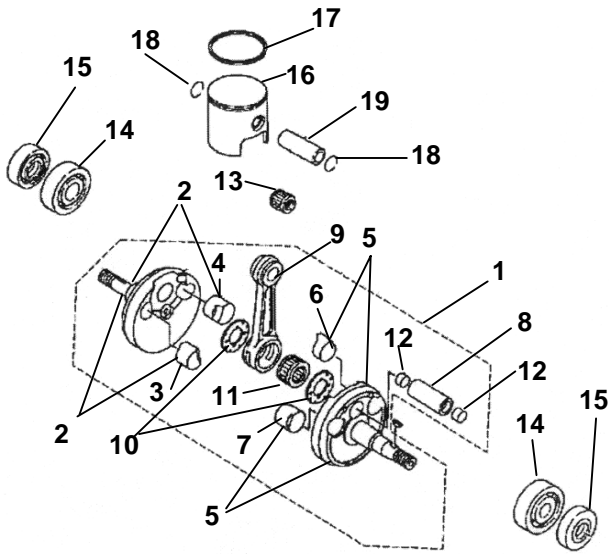


		AGS	YAMAHA	QTY
1	CYLINDER HEAD	EPY600	787-11111-04	1
2	SPARK PLUG	SP SECTION		1
3	GASKET CYLINDER HEAD	EPY9993	7ET-11181-10	1
4	BOLT STUD	EPY605	95617-08640	6
5	WASHER	EPY9995	92907-08600	6
6	NUT	EPY9996	90170-08N15	6
7	CYLINDER	EPY603SEC	7ET-11311-00	1
8	GASKET CYLINDER BASE	EPY9998	7YK-11351-00	1
9	NUT	EPY9999	90179-08N00	4
10	DAMPER HEAD	EPY603F	7YA-11161-00	2
11	DAMPER CYLINDER	EPY603G	7YA-11162-00	4

EPY-21 KT100SEC cylinder

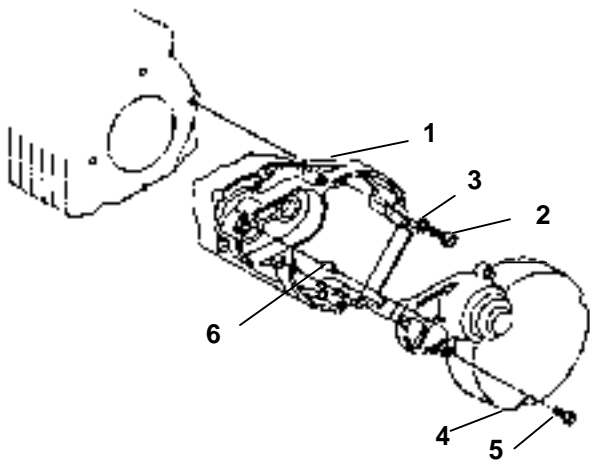
www.agskartparts.com.au

YAMAHA KT100SEC ELECTRIC START



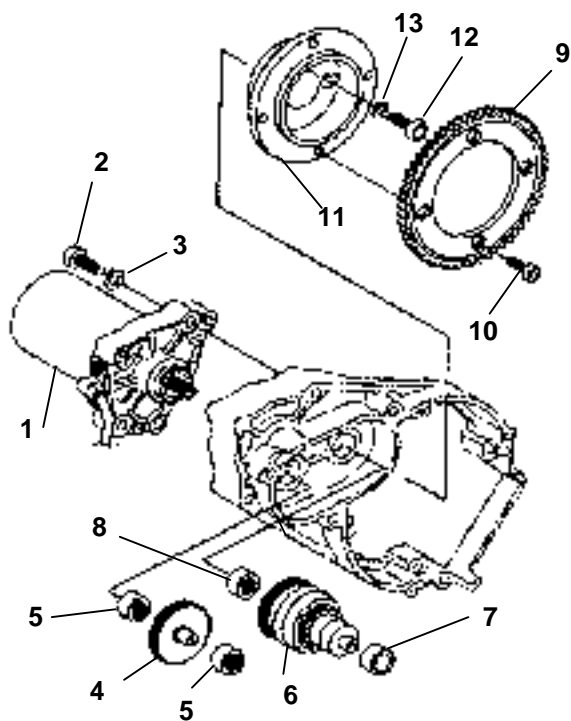
		AGS	YAMAHA	QTY
1	CRANKSHAFT ASSY	EPY9991	7YT-11400-30	1
2	CRANK HALF IGNITION	EPY9992	7YT-11412-10	1
3	BALANCE WEIGHT	EPY9993	7YT-11413-00	1
4	BALANCE WEIGHT 2	EPY9994	7YT-11423-00	1
5	CRANK HALF DRIVE	EPY9995	7YT-11422-30	1
6	BALANCE WEIGHT	EPY9993	7YT-11413-00	1
7	BALANCE WEIGHT 2	EPY9994	7YT-11423-00	1
8	BIG END PIN	EPY644	787-11681-00	1
9	CON ROD	EPY625	7F6-11651-02	1
10	THRUST WASHER B/END	EPY518	90209-20159	2
11	BEARING BIG END	EPY626	93310-320T3	1
12	PLUG BIG END PIN	EPY645	787-15385-00	2
13	BEARING LITTLE END	EPY627A	93310-214T1	1
14	BEARING MAIN	EPY524B		2
15	SEAL DRIVE & IGNITION	EPY526	93102-20N03	2
16	PISTON RING CHECK KT100S page EPY-19			1
17	PISTON CHECK KT100S page EPY-19			1
18	CLIP PISTON	EPY6431	90468-12N00	2
19	LITTLE END PIN	EPY529	131-11633-00	1

YAMAHA KT100SEC ELECTRIC START



		AGS	YAMAHA	QTY
1	COVER , CRANKCASE 1	EPY951	7YU-15411-00	1
2	BOLT	EPY952	91317-06030	4
3	WASHER	EPY953	90201-067F9	4
4	COVER CRANKCASE 2	EPY954	7YU-15421-00	1
5	BOLT	EPY955	91317-05020	5
6	PIN	EPY956	93605-10108	2

YAMAHA KT100SEC ELECTRIC START

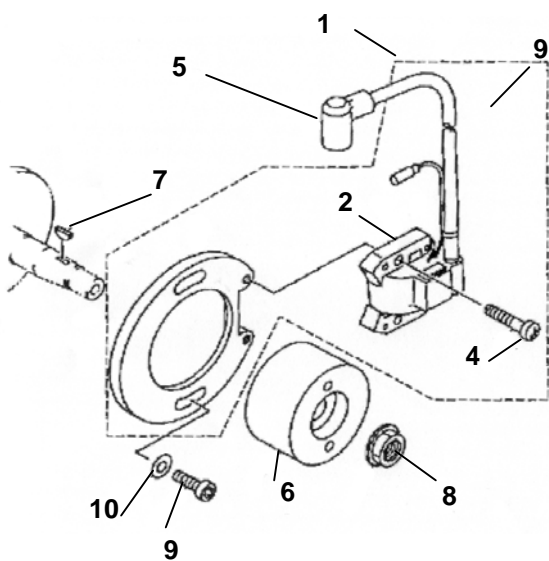


		AGS	YAMAHA	QTY
1	STARTER MOTOR	EPY960	7YU-81800-00	1
2	BOLT	EPY961	91317-06030	2
3	WASHER	EPY962	92907-06600	2
4	GEAR IDLER	EPY963	7TU-15512-00	1
5	BEARING NEEDLE	EPY964	TA810Z	2
6	GEAR 1	EPY965	7YU-15513-00	1
7	BEARING	EPY966	7YU-15936-00	1
8	BEARING NEEDLE	EPY967	TAM810	1
9	GEAR 3	EPY968	7YU-15515-00	1
10	BOLT	EPY969	91317-05012	4
11	STAY 1	EPY970	7YU-15544-00	1
12	BOLT	EPY971	91317-06030	2
13	WASHER	EPY972	90201-067F9	2

EPY-24 KT100SEC starter

www.agskartparts.com.au

YAMAHA KT100SEC ELECTRIC START

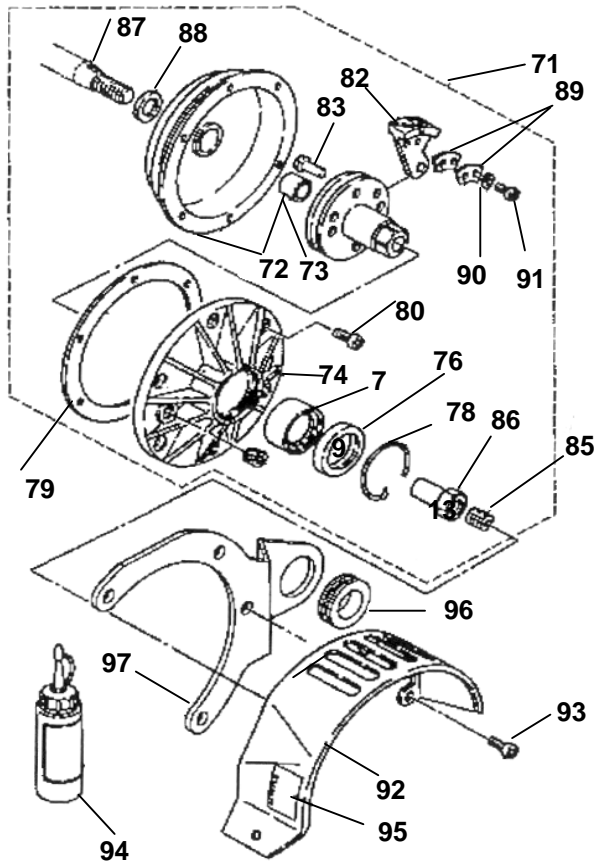


		AGS	YAMAHA	QTY
1	STATOR ASSY.	EPY973	7ET-85510-01	1
2	STATOR COIL	EPY974	7ET-85520-01	1
3	COVER	EPY975	7ET-85525-00	1
4	SCREW	EPY976	98507-05020	2
5	SPARK PLUG CAP	EPY977	7ET-82370-00	1
6	ROTOR	EPY978	7YT-85650-20	1
7	KEY IGNITION	EPY979	90280-03N00	1
8	NUT	EPY980	90179-12659	1
9	BOLT	EPY981	91317-06018	2
10	WASHER	EPY982	90201-06674	2

EPY-25 KT100SEC ignition

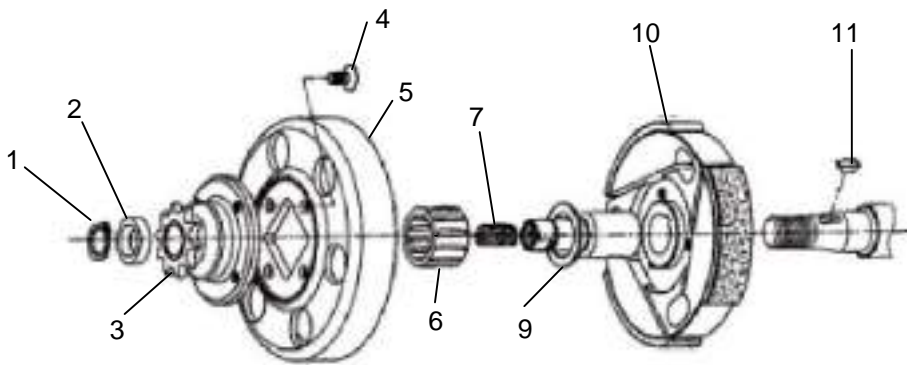
www.agskartparts.com.au

YAMAHA KT100SEC WET CLUTCH



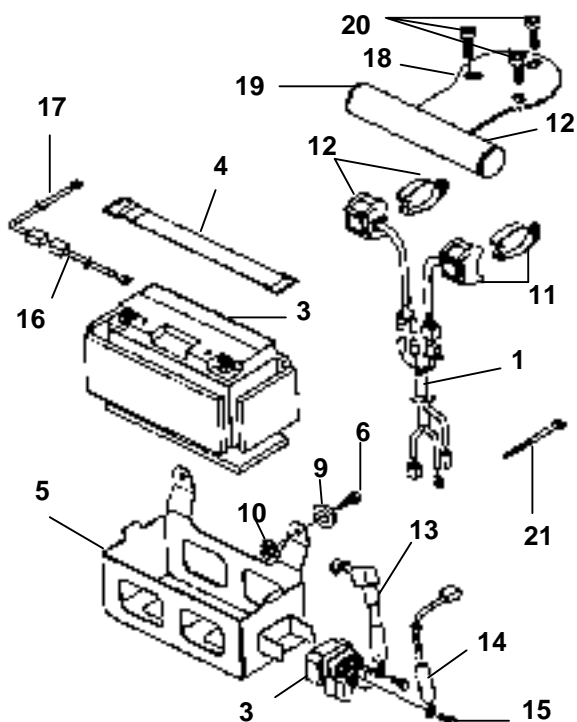
		AGS	YAMAHA	QTY
71	CLUTCH ASSY	EPY899	7YT-16600-00	1
72	HOUSING ASSY 11T	EPY900	7YB-16611-00	1
73	BEARING	EPY902	7F6-16642-01	1
74	HOUSING CLUTCH	EPY910	7F6-16614-02	1
75	BEARING	EPY907	93399-999T0	1
76	SEAL OIL	EPY908	93104-22N00	1
77	PLUG TAPER SCREW	EPY911	90344-41N00	2
78	CIR CLIP	EPY909	93450-35N00	1
79	GASKET	EPY906	7YK-16716-00	1
80	BOLT	EPY912	91317-04010	6
82	SHOE CLUTCH WEIGHT	EPY901	7YB-16623-00	3
83	PIN GUIDE	EPY914	7F6-16552-00	3
84	CARRIER CLUTCH WT	EPY915	7F6-16632-01	1
85	SCREW	EPY916	90149-10N08	1
86	NUT	EPY917	90179-10N02	1
87	KEY WOODRUFF	EPY532	90280-03N00	1
88	COLLAR SPACER	EPY9181	7YT-16643-00	1
89	WEIGHT	EPY903	7YT-16624-00	9
90	WASHER SHOE WEIGHT	EPY905	90201-04N20	1
91	BOLT SHOE WEIGHT	EPY904	91317-04010	6
92	COVER HOUSING	EPY918	7YT-16397-02	1
95	LABEL	EPY918A	7YT-16657-00	1
93	BOLT	EPY918B	91317-06012	4
97	BRACKET STARTER	EPY918C	7YU-81822-00	1
96	GROMMET	EPY918D	90480-22800	1
94	OIL CLUTCH	EPY919	90890-69917	1

YAMAHA KT100SEC DRY CLUTCH



		AGS	YAMAHA	QTY
	CLUTCH ASSY		SLCLC	1
1	CIR CLIP		SL-10571	1
2	SPACER		G-100573-A	1
3	SPROCKET 10T GENUINE		SL-10544-C	1
3	SPROCKET 10T			1
3	SPROCKET 11T GENUINE			1
3	SPROCKET 11T			1
4	SCREW M5		00030-K	4
5	CLUTCH DRUM		SL-10050	1
6	BEARING ROLLER		SL-10598	1
7	STOPPER SCREW M8		00009-K	1
8	SHAFT ADAPTER		SL-10559	1
9	SHIM		SL-10565	1
10	CLUTCH BODY		SL-10840	1
11	KEY		90280-03N00	1
	STARTER BOSS		SL-10886-C	1

YAMAHA KT100S ELECTRIC START



		AGS	YAMAHA	QTY
1	WIRE , SUB LEAD	EPY983	7YU-82509-01	1
2	STARTER RELAY ASSY.	EPY984	5HH-81940-00	1
3	BATTERY	EPY985	4GY-82100-01	1
4	BAND BATTERY	EPY986	118-82131-00	1
5	BOX, BATTERY	EPY987	7YU-2177G-00	1
6	DAMPER	EPY988	7YU-82176-00	3
7	DAMPER	EPY989	7YU-82176-10	2
8	SCREW FLAT HEAD	EPY990	98707-06025	4
9	ROSET	EPY991	JR1-06N02-10	4
10	NUT . U	EPY992	95607-06200	4
11	SWITCH HANDLE 1	EPY993	5HP-83976-00	1
12	SWITCH HANDLE 1	EPY994	22W-83976-00	1
13	WIRE PLUS LEAD	EPY995	5SJ-82115-00	1
14	WIRE PLUS LEAD	EPY996	7YU-82115-00	1
15	BOLT	EPY997	95027-06008	2
16	WIRE MINUS LEAD	EPY998	7YU-82116-00	1
17	WIRE MINUS LEAD	EPY998	7YU-82116-10	1
18	BRACKET SWITCH	EPY999A	7YU-83773-00	1
19	PLUG	EPY999B	90338-18122	2

EPY-27 KT100SEC battery

www.agskartparts.com.au