

***RAAP RACING  
PIPES / SKAA***

***TECHNICAL  
BULLETIN***

SUB JUNIORS, JUNIOR J,  
JUNIOR STANDARD, STANDARD  
and STANDARD HEAVY

*This document serves to clarify the length of the exhaust pipe/muffler coupling flange length as per rule 10.1.3.16 and 10.3.3.16 dimension C*

**10.3.3.16 Exhaust Pipe / Muffler**

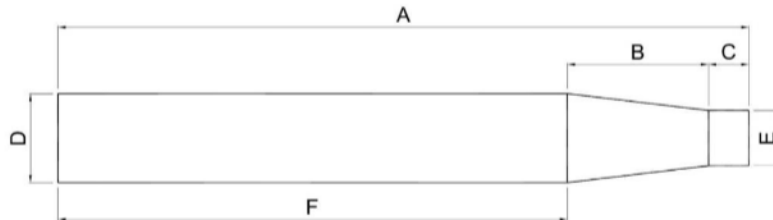
10.3.3.16.1 Make and manufacture is open but must be commercially available complying with the dimensions listed and detailed

10.3.3.16.2 The front cone of the exhaust is to be a minimum of 140mm long to a maximum of 190mm long.

10.3.3.16.3 The centre (belly section) between the front and rear cones must be parallel.

10.3.3.16.4 The centre (belly section) must have a minimum circumference of 278mm (88.50mm diameter).

10.3.3.16.5 The centre (belly section) must have a maximum circumference of 291mm (92.90mm diameter)



A = 685mm Max

B = 140mm Min. 190mm Max

C = 38mm Min.

D = 88.5mm Min. 92.5mm Max

E = 55mm Max

F = Must be Parallel

\* Optional External Silencer Allowed

\* 1 Only Internal Perforated Cone Allowed

\* Exhaust to be Single Skin Only (Measurements B+F)

\* Exhaust to be Parallel (Measurement F)

NOTE: ALL DIMENSIONS ARE MEASURED EXTERNALLY.

RAAP Racing Pipes had been manufacturing the RAAP Racing Pipes with a coupling flange of approximately 40mm. They had lots of requests from the AIDKA Go Kart racers, which was at time the main market for RAAP products, to reduce the size of the coupling flange. In December 2018, the flange coupling size was changed to a length of 28 to 30mm on the RAAP Clubman Class (KT100S) muffler and RAAP have produced approximately 250 units this way since December 2018. At the point in time when the change was made RAAP Racing Pipes complied with the rules of AIDKA and SKAA.

In February 2020 RAAP Racing Pipes was made aware of this rule change by a competitor and that the product now did not conform to the rules of SKAA. RAAP Racing Pipes contacted the SKAA President and in conjunction with the SKAA President and Technical Committee a solution to the non-compliance has been found.

RAAP Racing Pipes has produced a stainless steel sleeve that will simply slide over the existing coupling flange to make the coupling flange the length of 38mm as required. The sleeve is a simple neat slip fit that will slide over the flange coupling using hand pressure or soft face hammer to install. The sleeve does not require welding as it a neat fit and after a few heat cycles will stay firmly in place. RAAP Racing Pipes will supply the sleeves to SKAA competitors that have RAAP Racing Pipes at no cost and will send the sleeves to the retailer that the product was purchased from. If you require a sleeve please contact the Retailer you purchased your RAAP Racing Pipe from and they will contact RAAP Racing Pipes and RAAP Racing Pipes will send the required number of sleeves to that dealer.

RAAP Racing Pipes would like to make sure that Go Karters that have purchased a product in good faith will not be penalised during compliance checking. Please check your RAAP Racing Pipes to ensure they are correct, and you can enjoy your racing.

To be compliant to the SKAA rule this flange will need to be fitted at times during SKAA events Please see the images supplied below for reference.

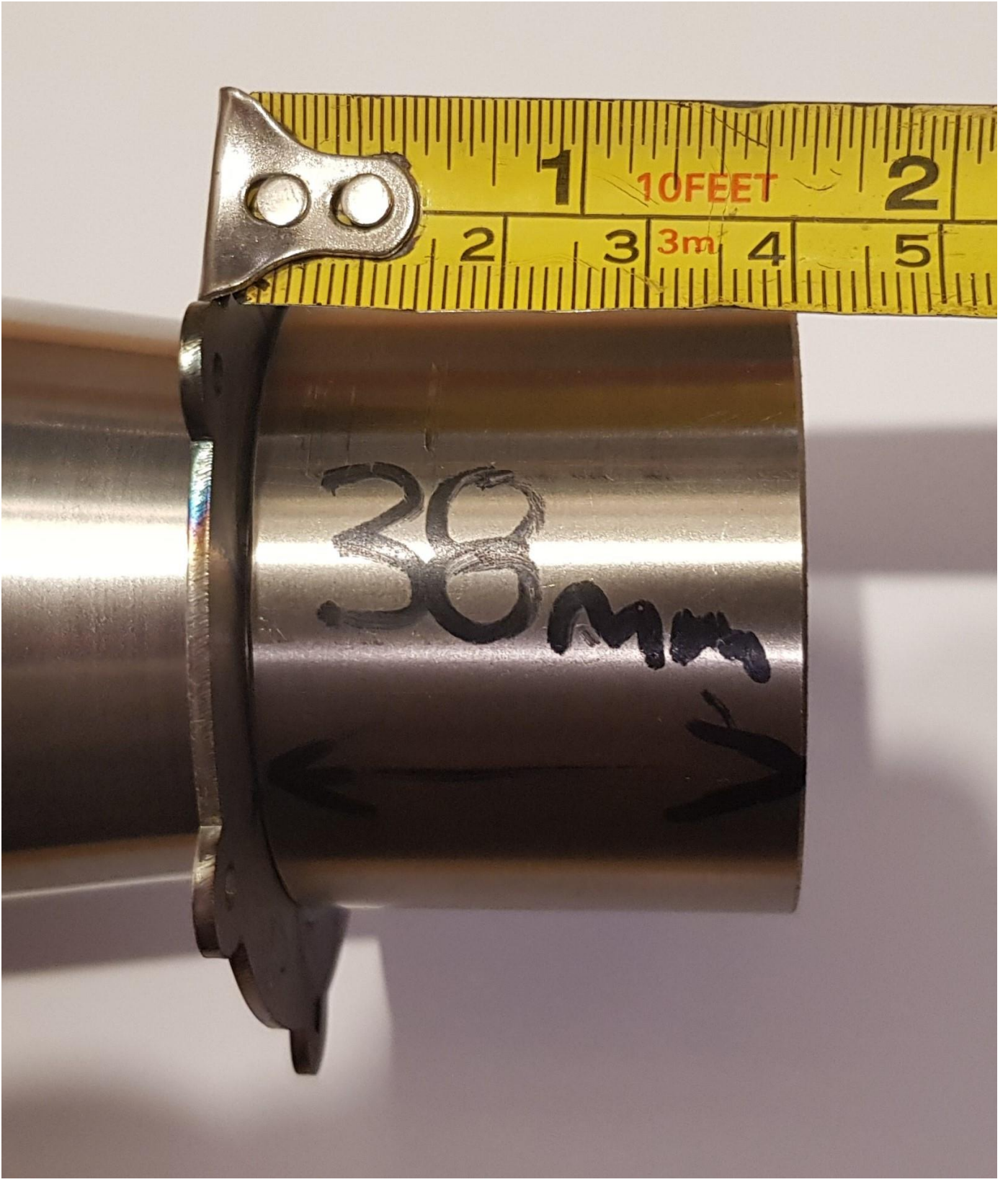
If you have any questions regarding this bulletin, please contact you dealer or RAAP Racing Pipes.

Regards

Robert Morton  
RAAP Racing Pipes







38 mm

